

# SUZUKI

## PARTS CATALOGUE



**TS185ERCV**  
**TS185ERW**



Way of Life!

2012-2

3<sup>RD</sup> EDITION

# TS185



TS185

## PREFACIO

Cuando sea necesario reemplazar piezas en las MOTOCICLETAS de SUZUKI, sírvase usar Siempre las PIEZAS GENUINAS DE SUZUKI que han pasado una estricta inspección de calidad y rendimiento.

Este catálogo contiene todas las piezas de recambio para las SUZUKI TS185 ERCV/TS185 ERW

### INSTRUCCIONES SOBRE EL USO DEL CATALOGO

#### 1. DIMENSIONES

#### 2. ABREVIATURAS

Las abreviaturas usadas son las siguientes:

AR	: Lo necesario	NT	: Numero de dientes
ASSY	: Conjunto	OPT	: Opcional
E.No.	: Numero de motor	OS	: Sobremedida
F.No.	: Numero de bastidor	STD	: Normalizado
D	: Diametro del material	T	: Espesor
ID	: Diametro interno	US	: Submedida
OD	: Diametro externo	W	: Ancho
L	: Longitud		
LH	: Lado izquierdo		
RH	: Lado derecho		

~100045: Hasta F. No. 100045

100046~: Desde F. No. 100046

12 x 34 x 5.6 ..... Los numeros en la columna de "Observaciones" muestran las dimensiones de las piezas.

T T T  
ID OD T (or W, L)

#### 3. PIEZAS INTERNAS DEL CONJUNTO

Las piezas marcadas con un punto (.) antes de la denominación, forman parte de un conjunto.

#### 4. NOTICIA DE MODIFICACIÓN

Se remitirá un boletín en el caso de modificación de piezas, que incluye modificaciones de intercambiabilidad entre piezas nuevas y viejas.

#### 5. NOTA

5-1. Hay ciertas diferencias entre las piezas de producción en serie y las de recambio por razones administrativas y por su uso comun en otros modelos.

5-2. En cuanto a las mangueras de goma y los tubos de vinilo, sírvase usarlos cortando según la longitud mencionada en el catálogo o según la realmente requerida por el vehículo.

5-3. Debe observarse que las ilustraciones son para una rápida referencia del número de pieza y no para usarse como un manual de montaje: para ello emplee siempre el "MANUAL DE SERVICIO DE SUZUKI".

#### 6. CODIGO DE ESPECIFICACION

Código: P9

#### 7. NUMERO DE SERIE DE MARCO O CHASIS

COLOR CHART  
TABLEAU DES COULEURS

COLOR NO. NO DE COULEUR	COLOR DESCRIPTION DESCRIPTION DE COULEUR	COLOR NO. NO DE COULEUR	COLOR DESCRIPTION DESCRIPTION DE COULEUR
C0G	1GT, 0NG, 0NH	0NH	PURE RED
C0H	1TC, 1GT, 0NF	0RM	SPLASH PURPLE (TAPE)
C0J	1GT, 0NG, 064, 0NH	019	BLACK
C0K	1TC, 1GT, 13L, 0NF	064	PURE WITHE
C5Z	30H, 0RM	08C	CHAMPAGNE GOLD
H9J	019, 0RM	1GT	OFF SIDE BLUE (TAPE)
J8L	1NG, Z16, 30H	1NG	TYRIAN PINK NO.2
J8M	1ZY, 019, 0NF	1TC	PHANTOM PINK METALLIC
J9M	1ZY, 019, 14C	1ZY	URBAN LIGHT GRAY METALLIC
J9N	1NG, Z16, 019	13L	BRIGHT SILVER METALLIC
J9P	13L, 0NF	14C	MARBLE CURRENT RED
K0E	U81, 064	21C	SMOKE BLACK
K0F	U82, 064	291	BLACK (SEMI-GLOSS)
U81	IRIS PURPLE (LEATHER)	30H	SPECIAL WHITE
U82	BLACK (LEATHER)	48F	BLACK
Y5V	TAPE PINK / PURPLE GRADATION	799	PRIMARY
Y5W	TAPE SILVER / BLACK GRADATION	88C	13L, 14C
Y5Y	SILVER / BLACK NO.2 (TAPE)		
Y5Z	PINK / PURPLE NO.2 (TAPE)		
Z16	IRIS PURPLE		
0NF	DYNAMIC BLUE		
0NG	EUROPEAN BLUE		

MILLIMETER → INCH CONVERSION CHART  
TABLA DE CONVERSION DE MILIMETROS → PULGADAS

	0	1	2	3	4	5	6	7	8	9
00	.000	.039	.079	.118	.157	.197	.236	.276	.315	.354
10	.394	.433	.472	.512	.551	.591	.630	.669	.709	.748
20	.787	.827	.866	.906	.945	.984	1.024	1.063	1.102	1.142
30	1.181	1.220	1.260	1.299	1.339	1.378	1.417	1.457	1.496	1.535
40	1.575	1.614	1.654	1.693	1.732	1.772	1.811	1.850	1.890	1.929
50	1.969	2.008	2.047	2.087	2.126	2.165	2.205	2.214	2.283	2.323
60	2.362	2.402	2.441	2.480	2.520	2.559	2.598	2.638	2.677	2.717
70	2.756	2.795	2.835	2.874	2.913	2.953	2.992	3.031	3.071	3.110
80	3.150	3.189	3.228	3.268	3.307	3.346	3.386	3.425	3.465	3.504
90	3.543	3.583	3.622	3.661	3.701	3.740	3.780	3.819	3.858	3.898

How to read  
Modo de lectura.

	0	1	2	3	4
00	...	...	...	...	...
10	...	...	...	...	...
20	...	...	...	0.906	...
30	...	...	...	...	...

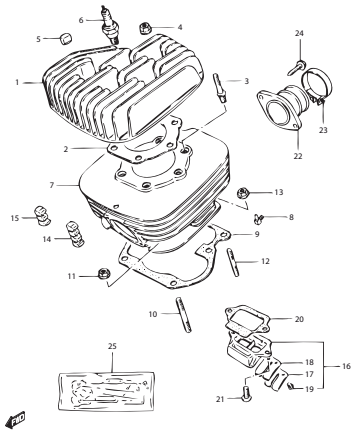
23 millimeters equal 0.906 inch.  
23 milímetros igual 0.906 pulgadas

Contents are subject to change without notice or obligation.

El contenido puede ser objeto de cambios sin previa notificación.

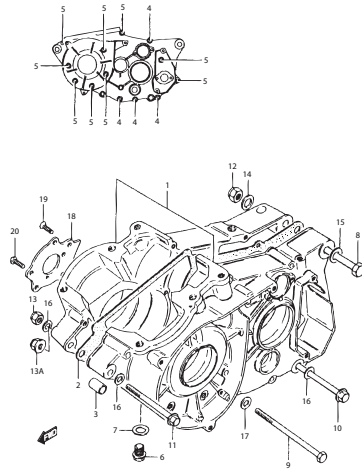


**FIG.1 CYLINDER**



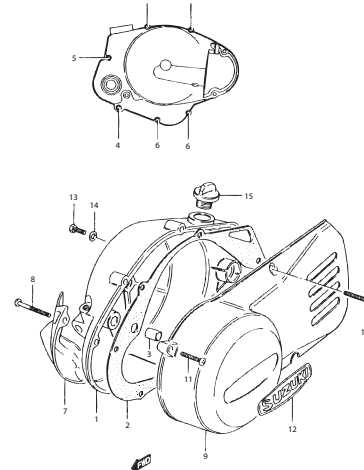
TS185ERC/VW\_001  
CYLINDER

**FIG.2 CRANKCASE**



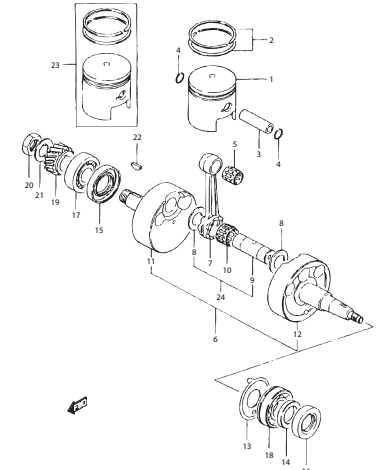
TS185ERC/VW\_002  
CRANKCASE

**FIG.3 CRANKCASE COVER**



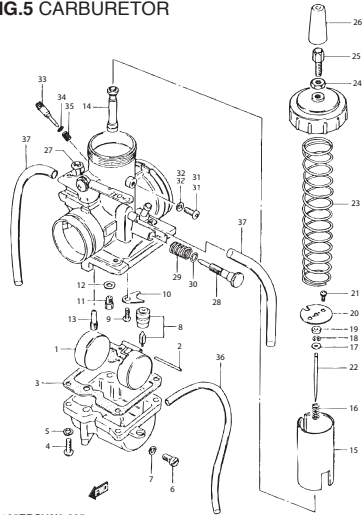
TS185ERC/VW\_003  
CRANKCASE COVER

**FIG.4 CRANKSHAFT**



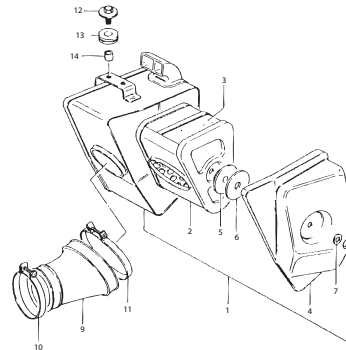
TS185ERC/VW\_004  
CRANKSHAFT

**FIG.5 CARBURETOR**



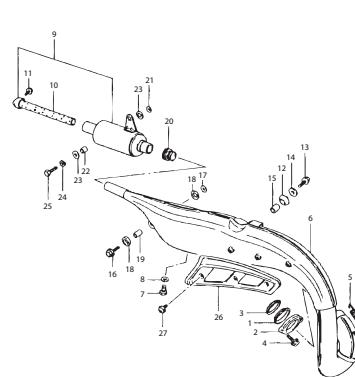
TS185ERC/VW\_005  
CARBURETOR

**FIG.6 AIR CLEANER**



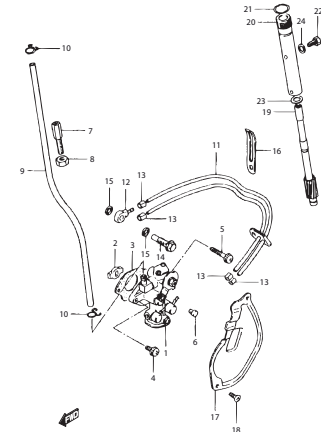
TS185ERC/VW\_006  
AIR CLEANER

**FIG.7 MUFFLER**



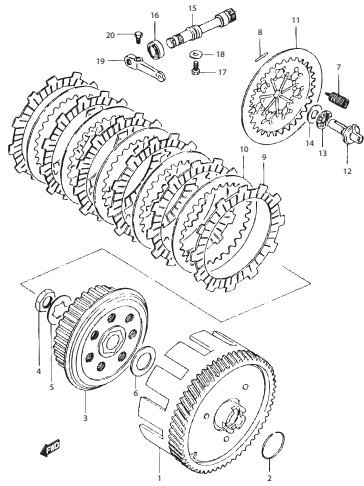
TS185ERC/VW\_007  
MUFFLER

**FIG.8 OIL PUMP**



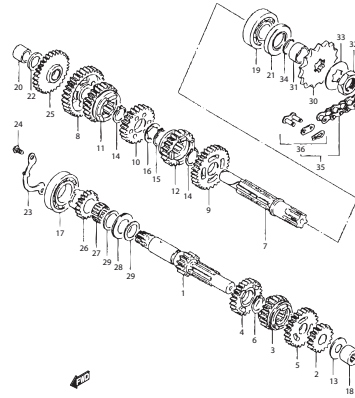
TS185ERC/VW\_008  
OIL PUMP

**FIG.9 CLUTCH**



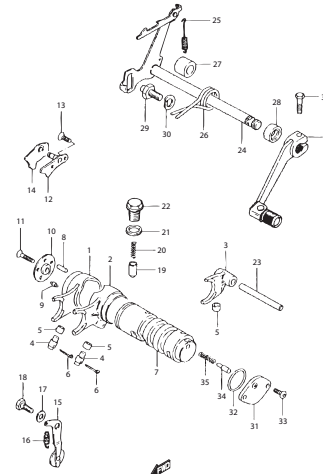
TS185ERC/VW\_009  
CLUTCH

**FIG.10 TRANSMISSION**



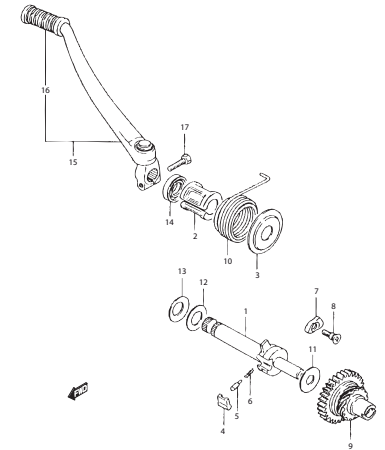
TS185ERC/VW\_010  
TRANSMISSION

**FIG.11 GEAR SHIFTING**



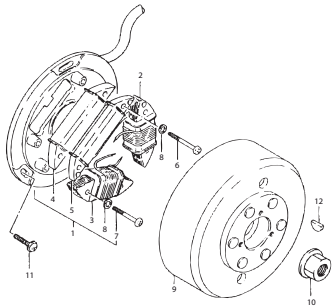
TS185ERC/VW\_011  
GEAR SHIFTING

**FIG.12 KICK STARTER**



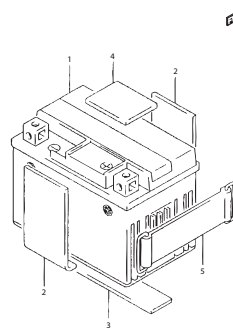
TS185ERC/VW\_012  
KICK STARTER

**FIG.13 MAGNETO**



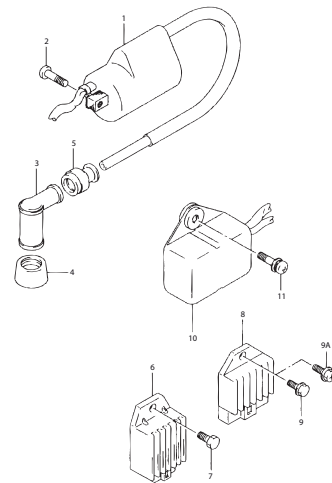
TS185ERC/VW\_013  
MAGNETO

**FIG.14 BATTERY**



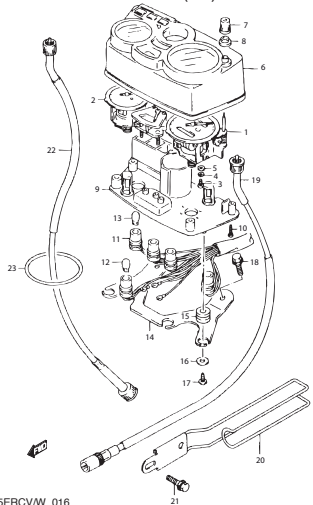
TS185ERC/VW\_014  
BATTERY

**FIG.15 ELECTRICAL**



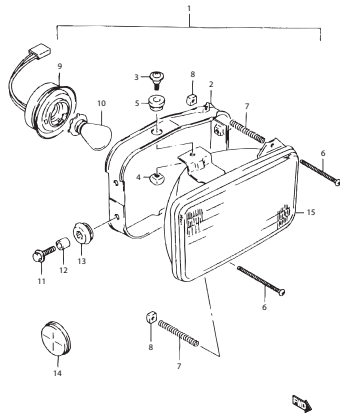
TS185ERC/VW\_015  
ELECTRICAL

**FIG.16 SPEEDOMETER (P9)**



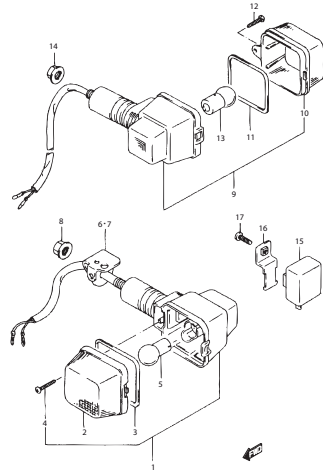
TS185ERC/VW\_016  
SPEEDOMETER

FIG.17 HEADLAMP (P9)



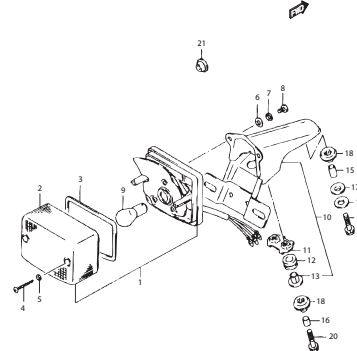
TS185ERC/VW\_017  
HEADLAMP

FIG.18 TURN SIGNAL LAMP (P9)



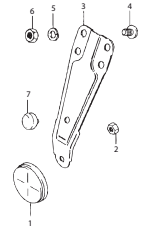
TS185ERC/VW\_018  
TURN SIGNAL LAMP

FIG.19 REAR COMBINATION LAMP



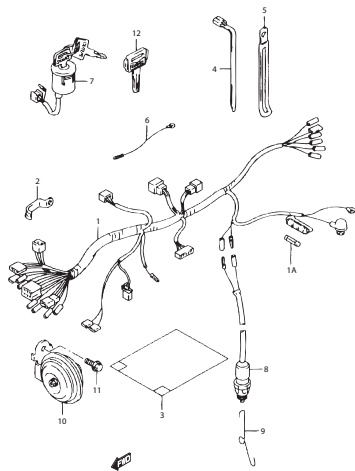
TS185ERC/VW\_019  
REAR COMBINATION LAMP

FIG.20 REFLEX REFLECTOR



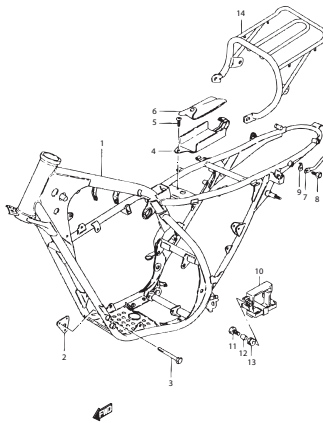
TS185ERC/VW\_020  
REFLEX REFLECTOR

FIG.21 WIRING HARNESS (P9)



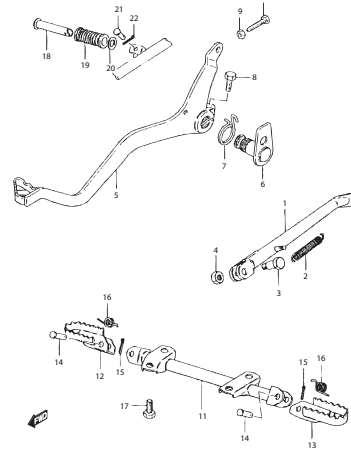
TS185ERC/VW\_021  
WIRING HARNESS

FIG.22 FRAME



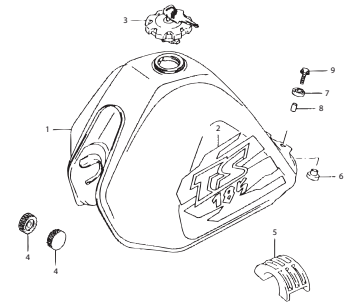
TS185ERC/VW\_022  
FRAME

FIG.23 STAND



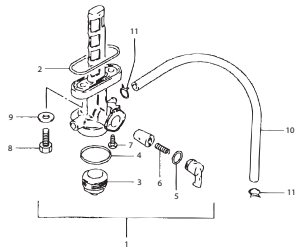
TS185ERC/VW\_023  
STAND

FIG.24 FUEL TANK



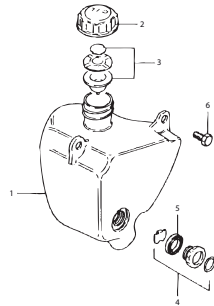
TS185ERC/VW\_024  
FUEL TANK

**FIG.25 FUEL COCK**



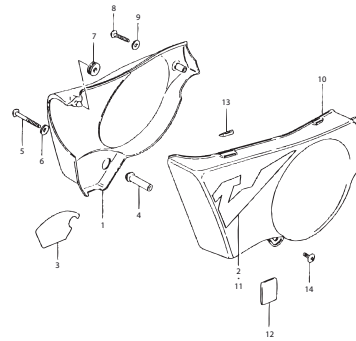
TS185ERC/VW\_025  
FUEL COCK

**FIG.26 OIL TANK**



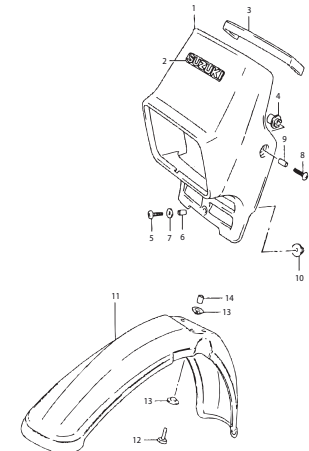
TS185ERC/VW\_026  
OIL TANK

**FIG.27 FRAME COVER**



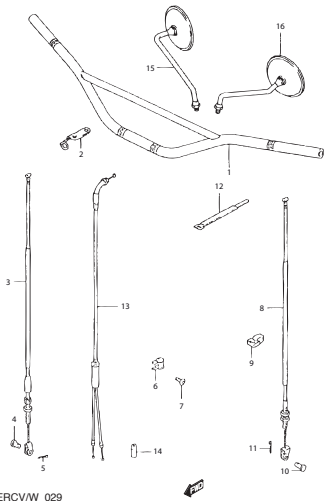
TS185ERC/VW\_027  
FRAME COVER

**FIG.28 HEADLAMP COVER**



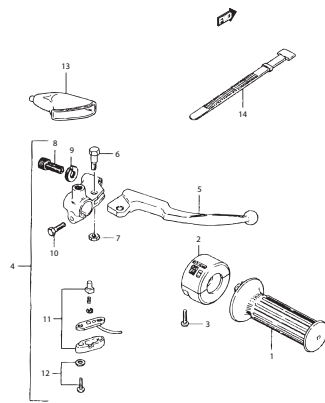
TS185ERC/VW\_028  
HEADLAMP COVER

**FIG.29 HANDLEBAR**



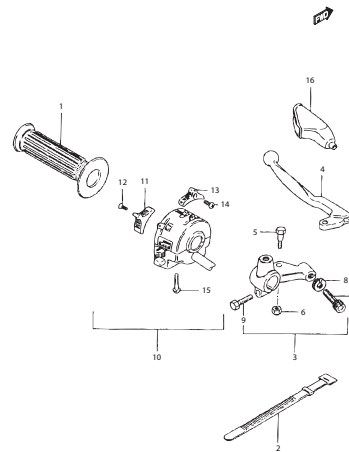
TS185ERC/VW\_029  
HANDLEBAR

**FIG.30 RIGHT HANDLE LEVER**



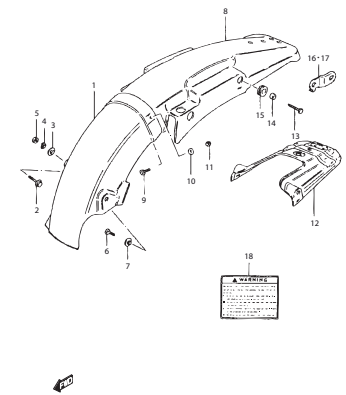
TS185ERC/VW\_030  
RIGHT HANDLE LEVER

**FIG.31 LEFT HANDLE LEVER**



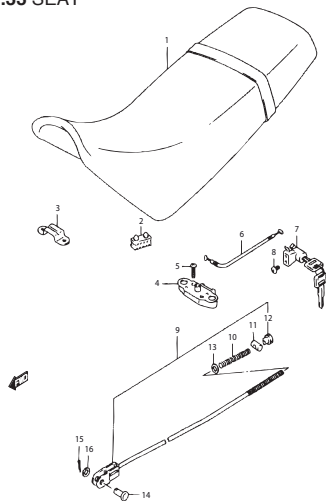
TS185ERC/VW\_031  
LEFT HANDLE LEVER

**FIG.32 REAR FENDER**



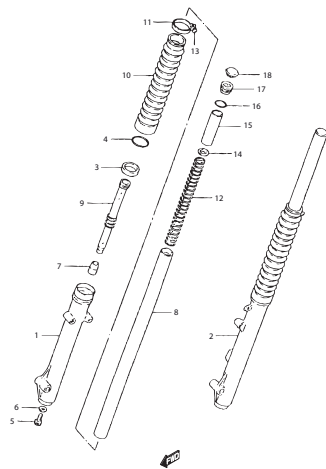
TS185ERC/VW\_032  
REAR FENDER

FIG.33 SEAT



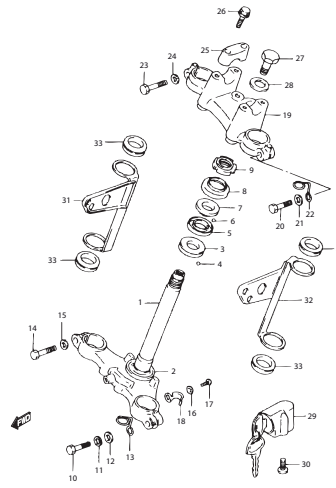
TS185ERC/VW\_033  
SEAT

FIG.34 FRONT DAMPER



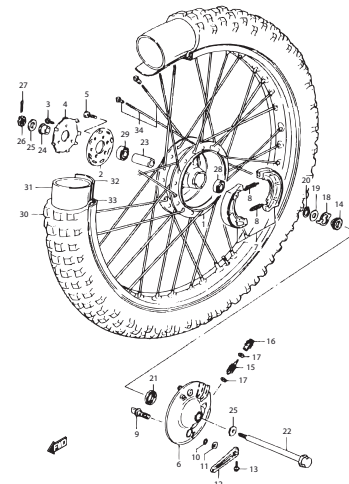
TS185ERC/VW\_034  
FRONT DAMPER

FIG.35 STEERING STEM



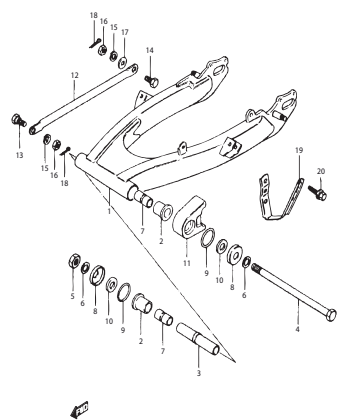
TS185ERC/VW\_035  
STEERING STEM

FIG.36 FRONT WHEEL



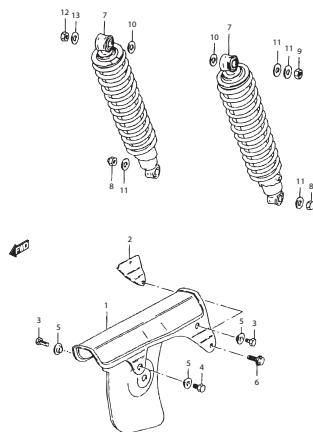
TS185ERC/VW\_036  
FRONT WHEEL

FIG.37 REAR SWING ARM



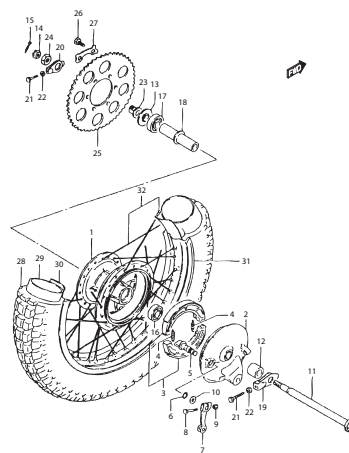
TS185ERC/VW\_037  
REAR SWING ARM

FIG.38 REAR SHOCK ABSORBER



TS185ERC/VW\_038  
REAR SHOCK ABSORBER

FIG.39 REAR WHEEL



TS185ERC/VW\_039  
REAR WHEEL

FIG.1

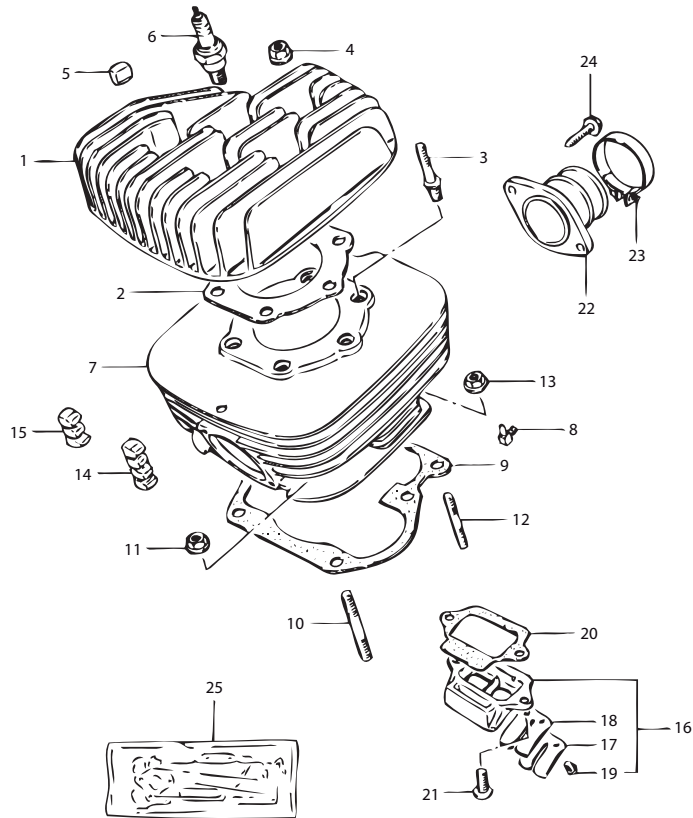


FIG.1 (1-B-2) CYLINDER

REF NO.	PART NO.	DESCRIPTION	QTY	REMARKS
1	11111-29304	HEAD, CYLINDER	1	
2	11141-29900	GASKET, CYLINDER HEAD	1	
3	09108-08018	STUD BOLT	6	
4	08316-1008A	NUT	6	
5	11251-30530	PAD, CYLINDER HEAD	11	
6-1	09482-00139	SPARK PLUG (NGK, BP7ES)	1	E24, P9
6-2	09482-00253-111	SPARK PLUG (DENSO, W22EP)	1	E24, P9
7	11210-29901	CYLINDER	1	
8	16910-31010	· UNION, OIL HOSE	1	
9	11241-29310	GASKET, CYLINDER	1	
10	01421-1025A	STUD BOLT NO.1	4	
11	08316-1010B	NUT	4	
12	01421-0825A	STUD BOLT NO.2	2	
13	08316-1008A	NUT	2	
14	11251-11300	PAD, CYLINDER NO.1 N10→N4	3	
15	11251-11300	PAD, CYLINDER NO.2 N10→N3	1	
16	13150-41113	VALVE ASSY, REED	1	
17	13152-41110	· STOPPER	1	
18	13153-41110	· VALVE, REED	1	
19	02112-0308A	· SCREW	2	
20	13156-41100-H17	GASKET, REED VALVE	1	
21	02112-06167	SCREW	2	
22	13110-30900	PIPE, INTAKE	1	
23	09402-48208	CLAMP	1	
24	01570-06163	BOLT	2	
25	11400-29865	GASKET SET	1	

FIG.2

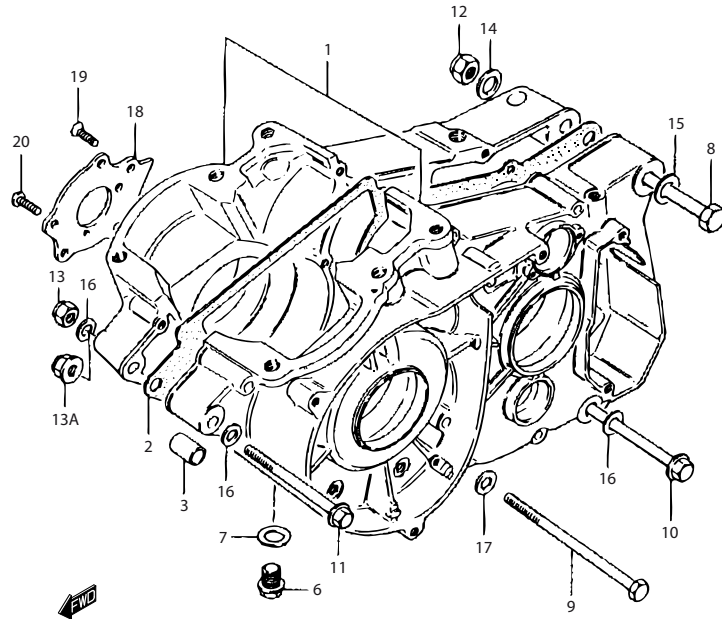
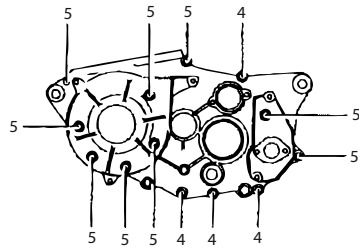


FIG.2 (1-B-3) CRANKCASE

REF NO.	PART NO.	DESCRIPTION	QTY	REMARKS
1	11300-29900	CRANKCASE SET	1	
2	11481-29310	·GASKET	1	
3	04211-13189	·PIN	2	
4	02112-06657	·SCREW	4	
5	02112-06457	·SCREW	9	
6	09247-14025	·PLUG, DRAIN	1	
7	09168-14002	·GASKET (13.8X18.8X0.4)	1	
8	09100-10274	BOLT (10X125)	1	
9	09100-08142	BOLT (8X145)	1	
10	09103-08109	BOLT (8X120)	1	
11	09103-08230	BOLT (8X100)	1	
12	09159-10011	NUT	1	
13	08319-2108B	NUT	3	MODEL T/V
13A	08319-3108A	NUT	3	MODEL W
14	08322-0110B	WASHER	1	
15	08322-01107	WASHER	1	
16	08322-0108B	WASHER	3	
17	08322-01087	WASHER	1	
18	12521-28002	PLATE, OIL RESERVOIR	1	
19	02122-06127	SCREW	2	
20	02112-06167	SCREW	3	



FIG.3

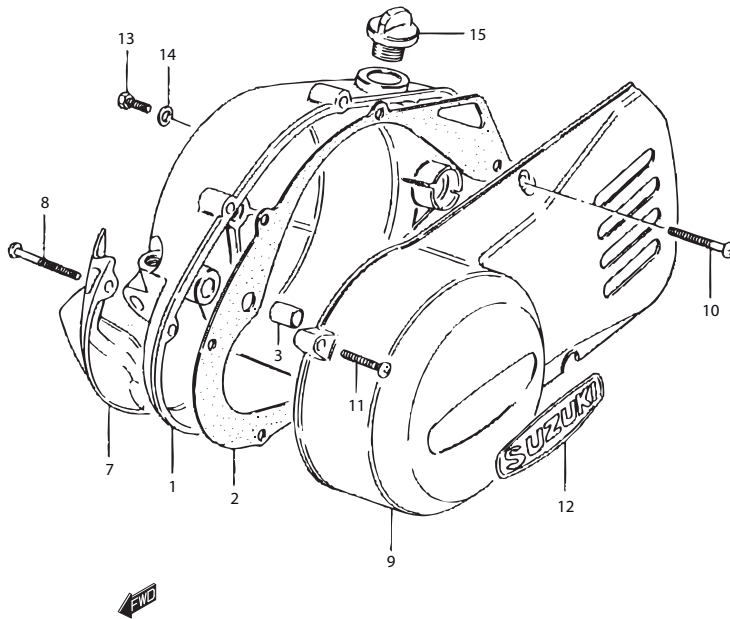
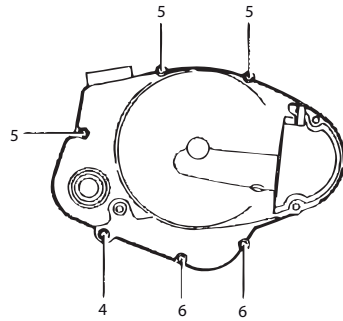


FIG.3 (1-B-4) CRANKCASE COVER

REF NO.	PART NO.	DESCRIPTION	QTY	REMARKS
1	11341-29900	COVER, CLUTCH	1	
2	11482-29310	GASKET, CLUTCH COVER	1	
3	04211-13189	PIN	2	
4	02112-06457	SCREW	1	
5	02112-0640A	SCREW	3	
6	02112-0625A	SCREW	2	
7	11451-29900	COVER, CLUTCH RELEASE ARM	1	
8	02112-0640A	SCREW	2	
9	11351-29301	COVER, MAGNETO	1	
10	02112-06307	SCREW	2	
11	02112-0625A	SCREW	2	
12	68233-28000	EMBLEM	1	
13	09128-06044	PLUG, OIL LEVEL	1	
14-1	09168-06001	GASKET	1	~E.NO. 131194
14-2	09168-06004	GASKET	1	E.NO. 131195~
15	09259-19001	PLUG, OIL FILLER	1	

FIG.4

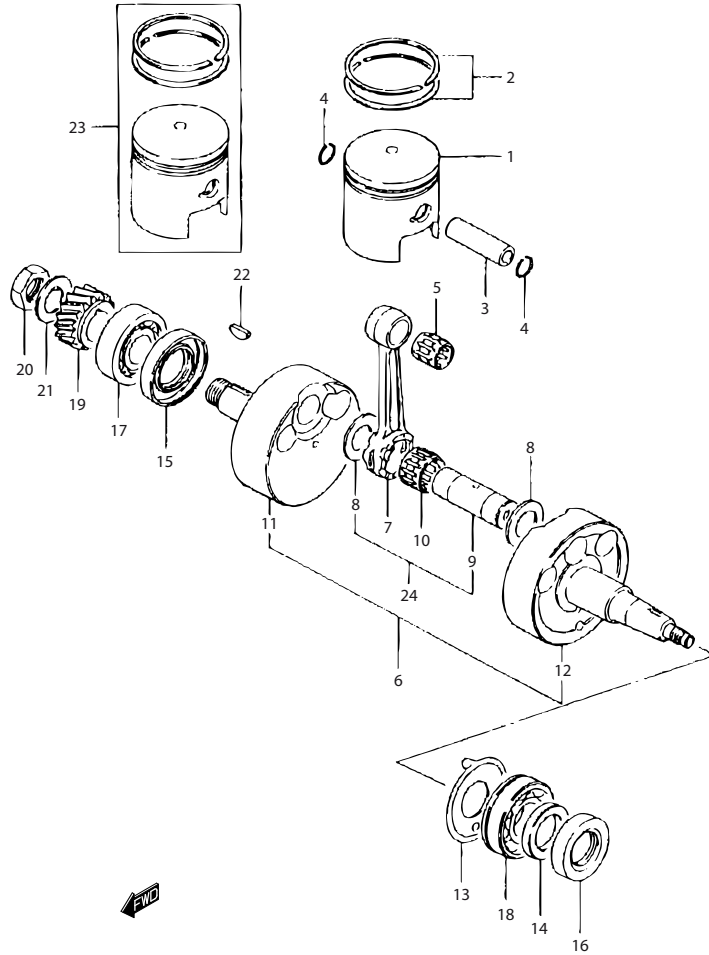


FIG.4 (1-B-5) CRANKSHAFT

REF NO.	PART NO.	DESCRIPTION	QTY	REMARKS
1	12110-29900	PISTON (STD)	1	
2	12140-29010	RING SET, PISTON (STD)	1	
3	12151-60D00	PIN, PISTON	1	
4	09381-16001	CIRCLIP	2	
5	09263-16015	BEARING, PISTON PIN	1	
6	12200-29602	CRANKSHAFT ASSY	1	
7	12161-41500	·ROD, CONNECTING	1	
8	09160-22010	·WASHER	2	
9	12211-29001	·PIN, CRANK	1	
10	09263-22032	·BEARING	1	
11	12221-29600	·CRANKSHAFT, RH	1	
12	12261-29602	·CRANKSHAFT, LH	1	
13	12511-29100	PLATE, OIL GUIDE	1	
14	09180-25029	SPACER	1	
15	09283-26007	OIL SEAL, RH	1	
16	09283-25066	OIL SEAL, LH	1	
17	09262-20073	BEARING, RH	1	
18	09269-25013	BEARING, LH	1	
19	21111-29000	GEAR, PRIMARY DRIVE (NT: 29)	1	
20	09140-18002	NUT	1	
21	09166-18001	WASHER	1	
22	08341-31059	KEY	1	
23-1	12100-29900-050	PISTON SET (OS: 0.5)	1	OPT
23-2	12100-29900-100	PISTON SET (OS: 1.0)	1	OPT
24	12105-29811	CON ROD SET INC. REF. NO. 5, 7, 8, 9 AND 10	1	OPT

FIG.5

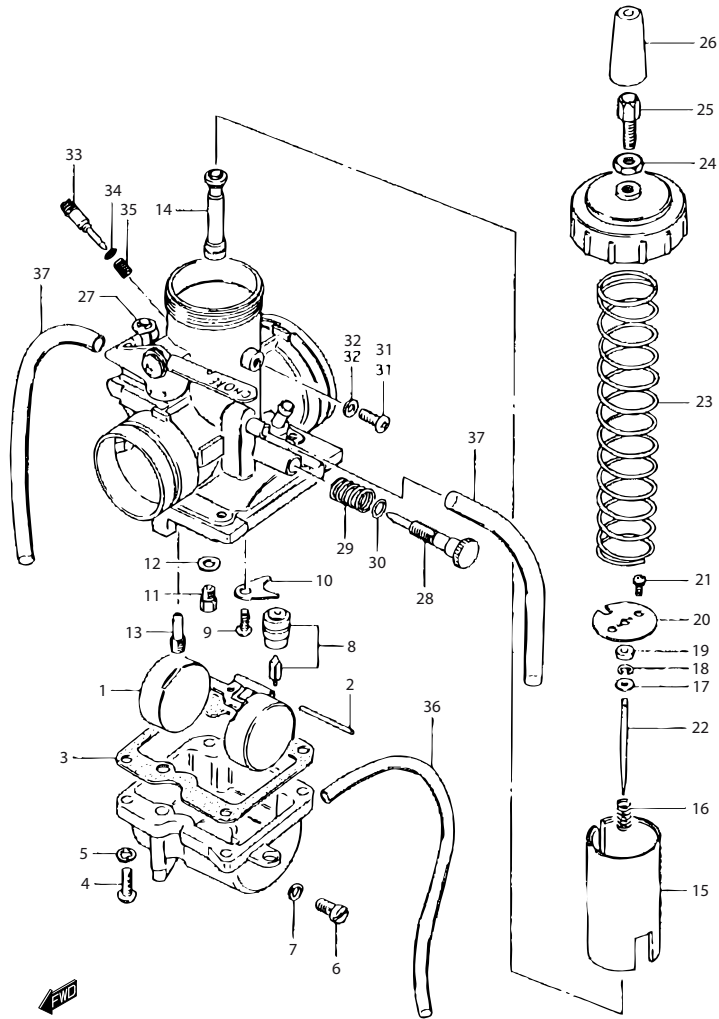


FIG.5 (1-B-6) CARBURETOR

REF NO.	PART NO.	DESCRIPTION	QTY	REMARKS
	13200-29911	CARBURETOR ASSY	1	
1	13252-29630	·FLOAT	1	
2	13254-01010	·PIN	1	
3	13251-30910	·GASKET	1	
4	02112-0416A	·SCREW	4	
5	08321-0106A	·LOCK WASHER	4	
6	13247-05010	·PLUG	1	
7	13249-05010	·GASKET	1	
8	13370-30941	·VALVE ASSY, NEEDLE	1	
9	02112-0408A	·SCREW	1	
10	13373-39110	·PLATE	1	
11	09491-38006	·JET, MAIN (195)	1	
12	13382-03110	·WASHER	1	
13	09492-25005	·JET, PILOT (25)	1	
14	09494-00259	·JET, NEEDLE (P-1)	1	
15	13551-30910	·VALVE, THROTTLE (CA: 2.5)	1	
16	13388-47010	·SPRING, NEEDLE JET	1	
17	13382-47010	·WASHER	1	
18	13394-10010	·E RING	1	
19	13387-47010	·RING	1	
20	13581-30910	·PLATE	1	
21	02112-33083	·SCREW	1	
22	13383-30910	·NEEDLE, JET (50H 48--3)	1	
23	13573-30900	·SPRING, THROTTLE VALVE	1	
24	13661-16600	·NUT	1	
25	13577-48110	·ADJUSTER, CABLE	1	
26	13681-16601	·CAP	1	
27	13424-33110	·BUSH	1	

FIG.5

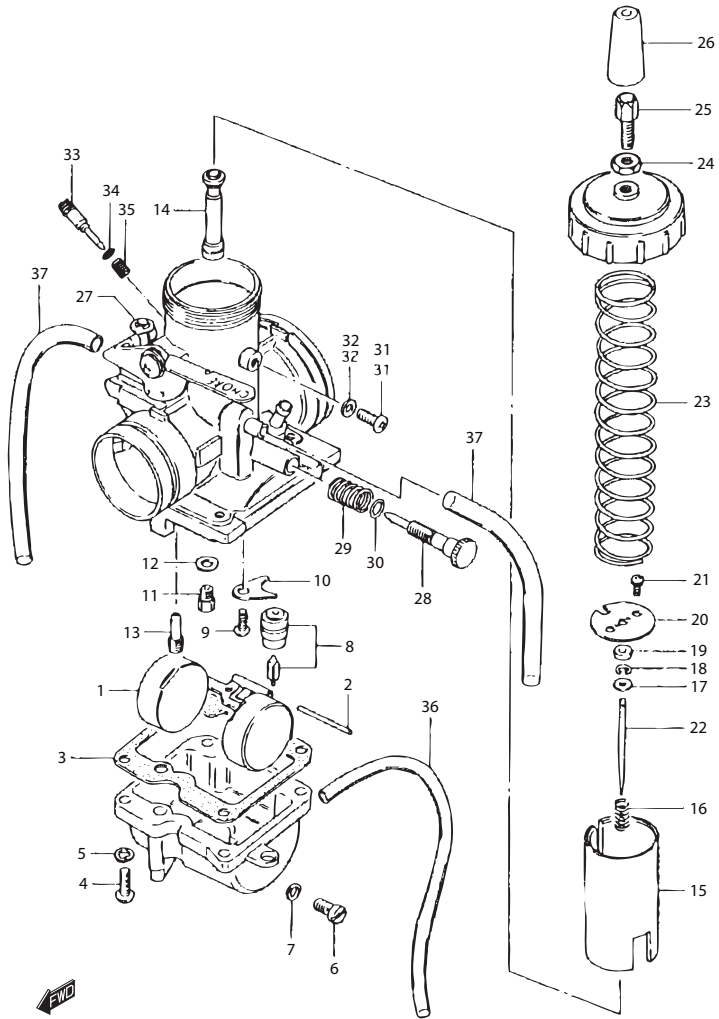


FIG.5 (1-B-7) CARBURETOR

REF NO.	PART NO.	DESCRIPTION	QTY	REMARKS
28	13267-36A00	·SCREW, THROTTLE STOP	1	
29	13268-46010	·SPRING	1	
30	13278-02340	·O RING	1	
31	02112-05063	·SCREW	1	
32	13523-46110	·GASKET	1	
33	13269-49020	·SCREW, PILOT AIR (1 1/4)	1	
34	13295-33010	·O RING	1	
35	13268-35010-000	·SPRING	1	
36	09352-30503-600	·TUBE, OVER FLOW (3X5X600)	1	L: 600→200
37	13684-40A00	·TUBE, AIR VENT (3X5X650)	2	L: 600→100

FIG.6

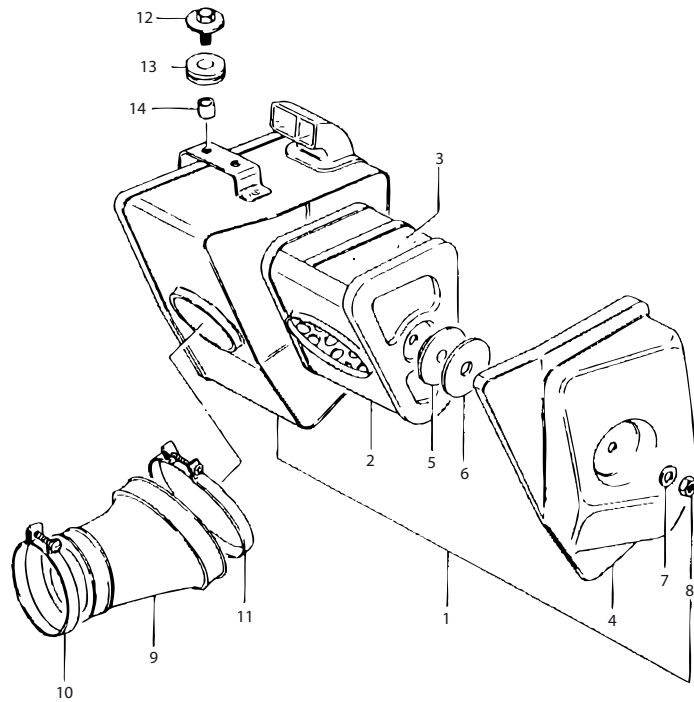


FIG.6 (1-B-8) AIR CLEANER

REF NO.	PART NO.	DESCRIPTION	QTY	REMARKS
1	13700-29312	CLEANER ASSY, AIR	1	
2	13780-29310	·FILTER ASSY	1	
3	13781-29310	··FILTER	1	
4	13771-29310	·CAP	1	
5	13789-28010	·SEAL	1	
6	13790-29310	·SPACER	1	
7	08322-01067	·WASHER	1	
8	08310-00067	·NUT	1	
9	13881-29910	HOSE, AIR INLET	1	
10	09402-56901	CLAMP, NO.1	1	
11	09402-66208	CLAMP, NO.2	1	
12	09116-06168	BOLT (6X16)	2	
13	09320-08021	CUSHION	2	
14	09180-06259	SPACER (7X9X7)	2	

FIG.7

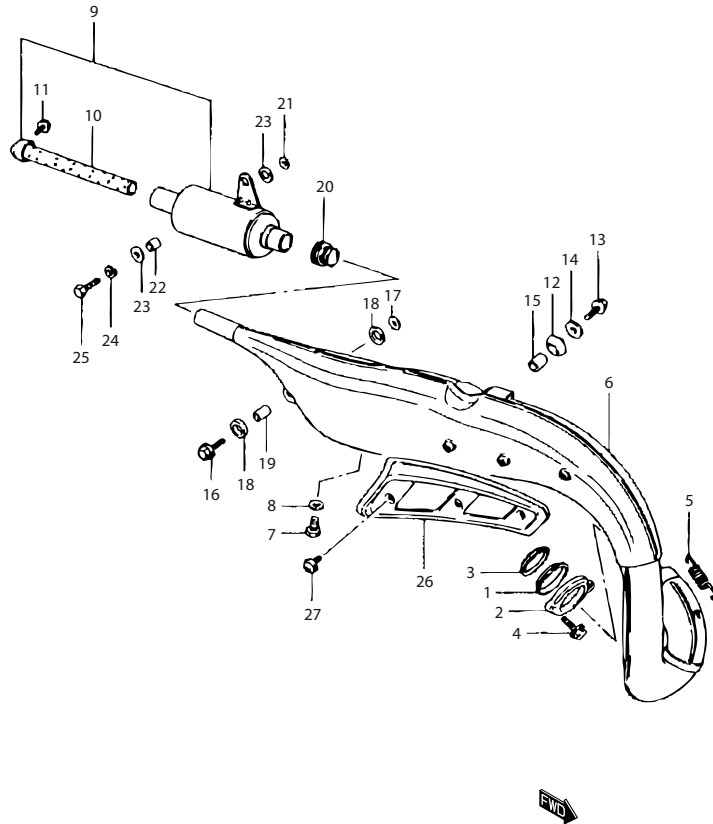


FIG.7 (1-B-9) MUFFLER

REF NO.	PART NO.	DESCRIPTION	QTY	REMARKS
1	14181-28080	GASKET, EXHAUST PIPE (CONICAL)	1	
2	14182-28000	CLAMP, EXHAUST PIPE	1	
3	14184-28011	CUSHION, EXHAUST PIPE	1	
4	01570-06253	BOLT	2	
5	09443-11002	SPRING	1	
6	14301-29910-H01	MUFFLER, 1ST	1	P9
7	09128-10002	PLUG, DRAIN	1	
8	09168-10002	GASKET	1	
9	14303-29900	MUFFLER ASSY, 2ND	1	P9
10	14510-30500	PIPE, BUFFLE	1	P9
11	02112-36083	SCREW	1	
12	14772-30500	DAMPER, MUFFLER FRONT	1	
13	09118-08078	BOLT (8X35)	1	
14	09160-08134	WASHER (8.2X26X1.6)	1	MODEL W/V
15	09180-08302	SPACER	1	MODEL W/V
16	01500-08257	BOLT	1	
17	09160-08054	WASHER (8.2X20X1.6)	1	MODEL W/V
18	09320-14006	CUSHION	2	
19	09180-08200	SPACER	1	MODEL W/V
20	14771-43D00	CONNECTOR	1	
21	09160-08134	WASHER (8.2X26X1.6)	1	MODEL W/V
22-1	09180-08083	SPACER	1	MODEL T/V
22-2	09180-08201	SPACER (8.5X14X10.6)	1	MODEL W
23	09320-14006	CUSHION	2	
24	08321-01087	LOCK WASHER	1	
25	01500-08257	BOLT	1	
26	14781-29900	COVER, MUFFLER	1	
27	02112-36083	SCREW	3	

FIG.8

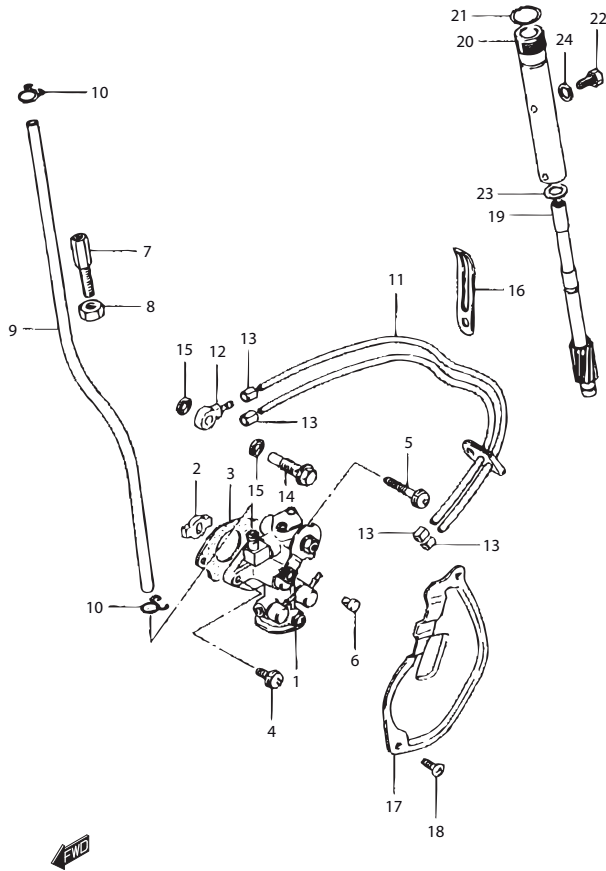


FIG.8 (1-B-10) OIL PUMP

REF NO.	PART NO.	DESCRIPTION	QTY	REMARKS
1	16100-29911	PUMP ASSY, OIL	1	
2	16391-05031	PIECE, DRIVE	1	
3	16731-03101	GASKET, OIL PUMP	1	
4	02112-3516A	SCREW	1	
5	02112-35307	SCREW	1	
6	16292-03112	TERMINAL, CABLE	1	
7	09119-08014	ADJUSTER, CABLE	1	
8	08310-00087	NUT	1	
9	09355-45855-600	HOSE, OIL INLET (L: 600275)	1	
10	09401-08401	CLAMP	2	
11	16820-29900	HOSE, OIL OUTLET	1	
12	09363-02002	UNION	1	
13	09401-04401	CLIP	4	
14	09360-06009	UNION BOLT, CYLINDER	1	
15	09168-06004	GASKET	2	
16	09404-06429	CLAMP (6X35)	2	
17	11380-27300	CAP, INSPECTION	1	
18-1	02112-06103	SCREW	2	MODEL T/V
18-2	02112-0612A	SCREW	2	MODEL W
19	26431-29000	GEAR, TACHO. DRIVEN (NT: 11)	1	
20	26441-28002	SLEEVE, DRIVEN GEAR	1	MODEL W/V
21	09280-10001	O RING	1	
22	09135-06009	BOLT	1	
23	09160-08003	WASHER	1	
24	08322-0106B	WASHER	1	



FIG.9

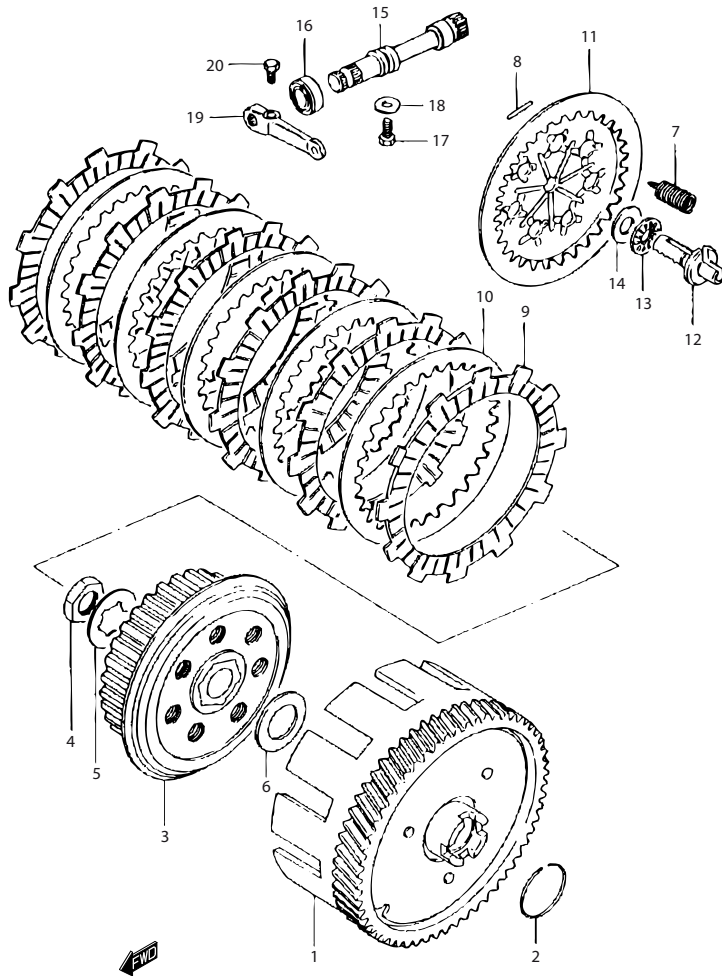


FIG.9 (1-C-2) CLUTCH

REF NO.	PART NO.	DESCRIPTION	QTY	REMARKS
1	21200-29003	GEAR, PRIMARY DRIVEN (NT: 61)	1	
2	09380-30005	CLIP	1	
3	21410-39131	HUB, SLEEVE	1	
4	09140-16005	NUT	1	
5	09167-17002	WASHER	1	
6	08211-17282	WASHER	1	
7	09443-12018	SPRING	7	
8	09261-02001	PIN	7	
9	21441-13A01	PLATE, DRIVE	6	
10	21451-19A00	PLATE, DRIVEN	5	
11	21460-28000	PLATE, PRESSURE	1	
12	23165-28001	RACK, RELEASE	1	
13	09263-10002	BEARING	1	
14	09160-10021	WASHER	1	
15	23261-28300	PINION, RELEASE	1	
16	09285-12006	OIL SEAL	1	
17	09135-06009	BOLT	1	
18	08322-0106B	WASHER	1	
19	23271-29300	ARM, RELEASE	1	
20	01500-0620A	BOLT	1	

FIG.10

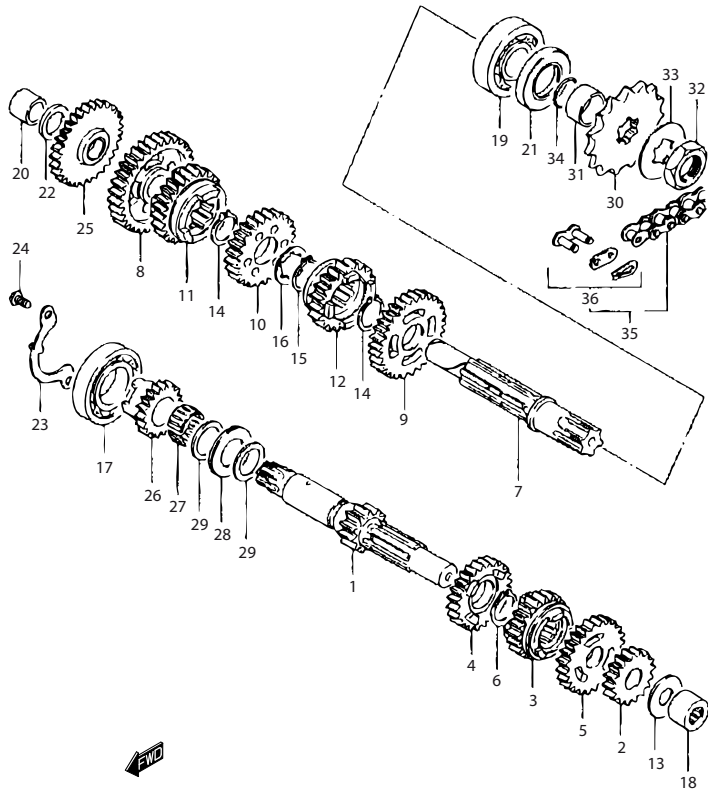


FIG.10 (1-C-3) TRANSMISSION

REF NO.	PART NO.	DESCRIPTION	QTY	REMARKS
1	24121-29004	COUNTERSHAFT (NT: 12)	1	MODEL W/V
2	24221-28001	GEAR, 2ND DRIVE (NT: 16)	1	
3	24231-28003	GEAR, 3RD DRIVE (NT: 20)	1	
4	24241-28001	GEAR, 4TH DRIVE (NT: 23)	1	MODEL W/V
5	24250-28000	GEAR, 5TH DRIVE (NT: 25)	1	
6	09380-20007	CIRCLIP	1	
7	24131-28001	DRIVESHAFT	1	
8	24310-28000	GEAR, 1ST DRIVEN (NT: 33)	1	MODEL T/V
9	24321-28001	GEAR, 2ND DRIVEN (NT: 29)	1	MODEL W
10	24331-28002	GEAR, 3RD DRIVEN (NT: 25)	1	MODEL W/V
11	24341-28003	GEAR, 4TH DRIVEN (NT: 23)	1	MODEL W/V
12	24351-28002	GEAR, 5TH DRIVEN (NT: 20)	1	MODEL W/V
13	08211-15301	WASHER	1	
14	09380-20007	CIRCLIP	2	
15	09380-20006	CIRCLIP	1	
16	09167-20022	WASHER	1	
17	08113-60060	BEARING, RH	1	
18	09263-15009	BEARING, LH	1	
19	09262-20073	BEARING	1	
20	09303-15004	BUSHING	1	
21	09283-25107	OIL SEAL	2	
22	08211-15301	WASHER	1	
23	24741-28001	HOLDER, BEARING	1	
24	02112-0612A	SCREW	2	
25	26260-28003	GEAR, KICK STARTER IDLE	1	NT: 29
26	26281-36200	GEAR, KICK STARTER DRIVEN	1	NT: 18
27	09263-19006	BEARING	1	
28	09263-21006	BEARING	1	
29	09160-21007	WASHER	2	
30	27511-29002	SPROCKET, ENGINE (NT: 12)	1	

FIG.10

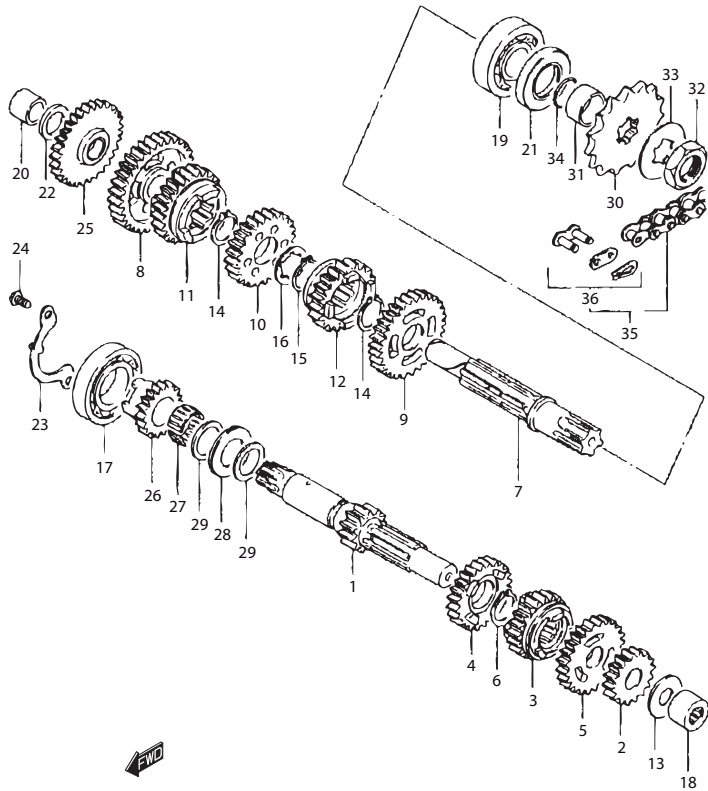


FIG.10 (1-C-4) TRANSMISSION

REF NO.	PART NO.	DESCRIPTION	QTY	REMARKS
31	09180-20102	SPACER	1	
32	09140-20001	NUT	1	
33	09167-20009	WASHER	1	
34	09280-20001	O RING	1	
35	27600-43D01-108	CHAIN, DRIVE (DID520DS5)	1	L: 108→96
36	27620-43D00	·JOINT	1	

FIG.11

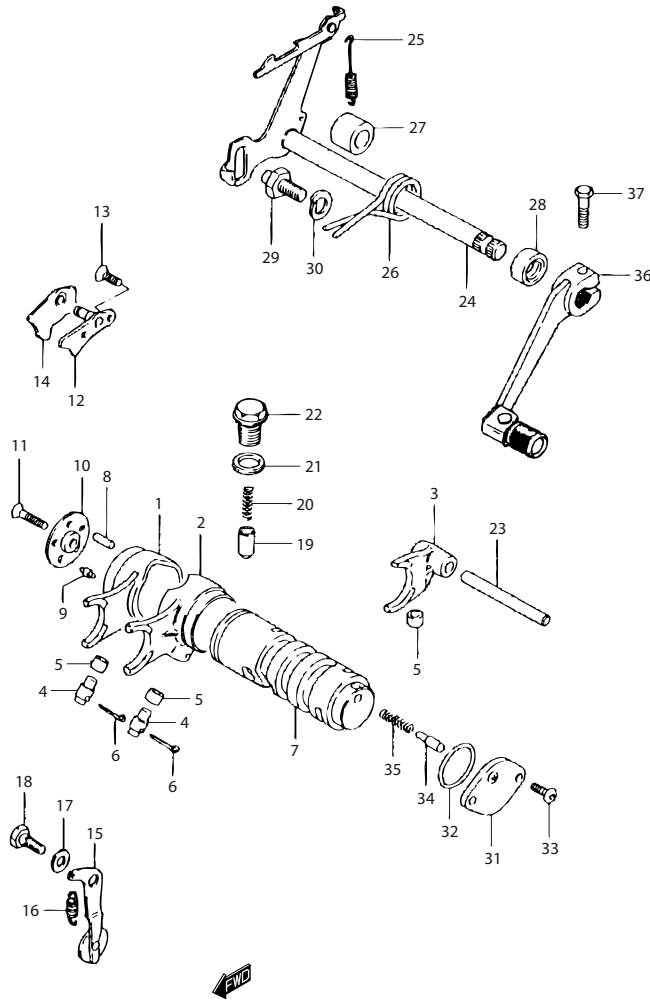


FIG.11 (1-C-5) GEAR SHIFTING

REF NO.	PART NO.	DESCRIPTION	QTY	REMARKS
1	25211-28002	FORK, GEAR SHIFTING NO.1	1	
2	25221-28002	FORK, GEAR SHIFTING NO.2	1	MODEL V/W
3	25231-28003	FORK, GEAR SHIFTING NO.3	1	MODEL V/W
4	09209-10002	PIN	2	
5	09180-06086	ROLLER	3	
6	04111-2520A	COTTER PIN	2	
7	25311-29301	CAM	1	
8	09261-04002	PIN	4	
9	09209-04012	PIN	1	
10	25322-28030	RETAINER, DRIVE PIN	1	
11	02122-0620B	SCREW	1	
12	25340-12101	GUIDE, CAM	1	
13	02122-0616A	SCREW	2	
14	25370-12101	PAWL, STOPPER	1	
15	25350-28001	STOPPER, CAM NO.1	1	
16	09443-07014	SPRING	1	
17	09160-06022	WASHER	1	
18	09111-06003	BOLT	1	
19	25351-39300	STOPPER, CAM NO.2	1	MODEL V/W
20	09440-05018	SPRING	1	
21	09168-14002	GASKET (13.8X18.8X0.4)	1	
22	25352-11010	BOLT, STOPPER	1	
23	25411-05100	SHAFT, FORK	1	
24	25510-29300	SHAFT, GEAR SHIFTING	1	
25	09443-06008	SPRING	1	
26	09444-26008	SPRING	1	
27	09180-12083	SPACER	1	
28	09285-12006	OIL SEAL	1	
29	25671-19000	STOPPER, ARM	1	
30	08321-01107	LOCK WASHER	1	

FIG.11

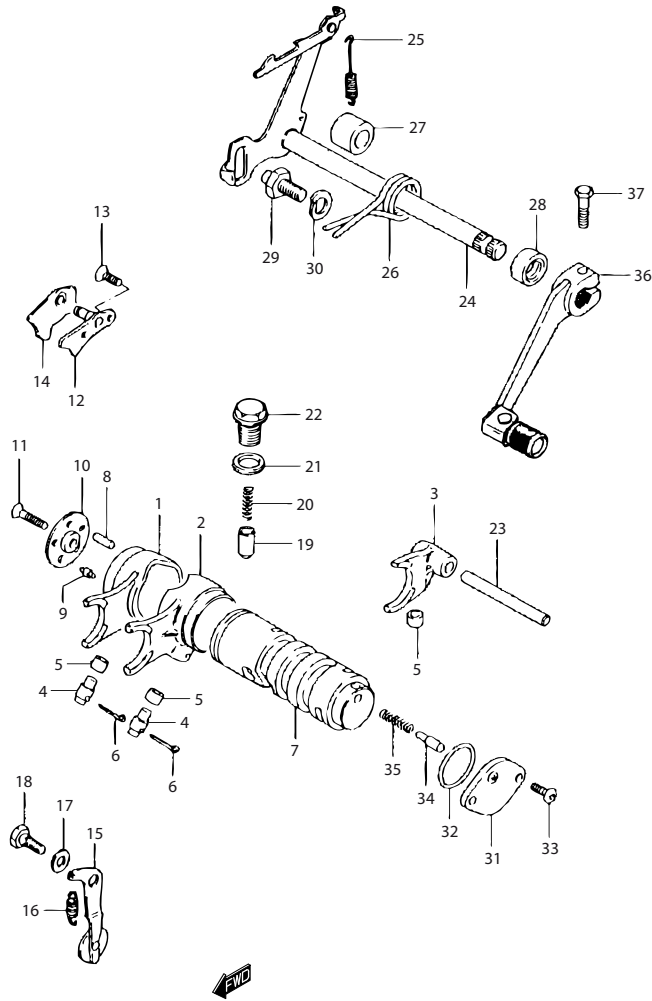
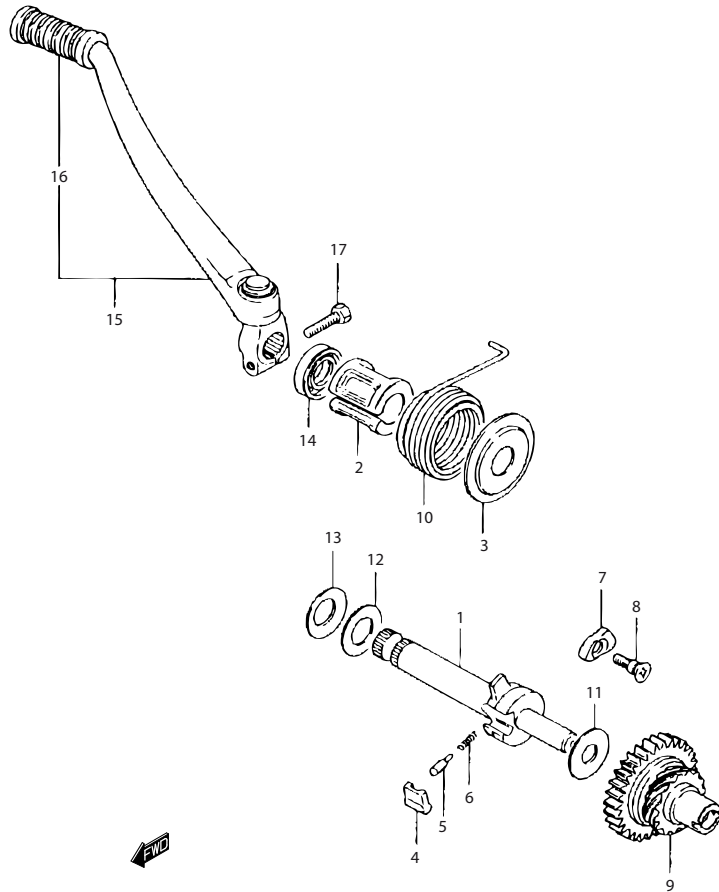


FIG.11 (1-C-6) GEAR SHIFTING

REF NO.	PART NO.	DESCRIPTION	QTY	REMARKS
31	37720-29350	BODY, SWITCH	1	
32	09280-26005	O RING	1	
33	02112-0512A	SCREW	2	
34	09209-05011-000	CONTACT, SWITCH	1	
35	09440-04010	SPRING	1	
36	25600-29310	LEVER ASSY, GEAR SHIFTING	1	
37	01500-0620A	BOLT	1	

**FIG.12**



**FIG.12 (1-C-7) KICK STARTER**

REF NO.	PART NO.	DESCRIPTION	QTY	REMARKS
1	26211-28301	SHAFT, KICK STARTER	1	
2	26221-23030	GUIDE, SPRING	1	
3	26222-28300	HOLDER, SPRING	1	
4	26231-20000	PAWL, KICK STARTER	1	
5	09209-05011-000	PIN	1	
6	09440-04010	SPRING	1	
7	26232-01000	LIFTER, PAWL	1	
8	09139-06002	SCREW	1	
9	26240-29300	GEAR, DRIVE (NT: 31/15)	1	
10	09448-45004	SPRING	1	
11	09160-12036	WASHER	1	
12	09160-16016	WASHER	1	
13	09164-16001	WASHER	1	
14	09285-16002	OIL SEAL	1	
15	26300-29303	LEVER ASSY, KICK STARTER	1	
16	26352-16401	RUBBER	1	
17	01500-08257	BOLT	1	

FIG.13

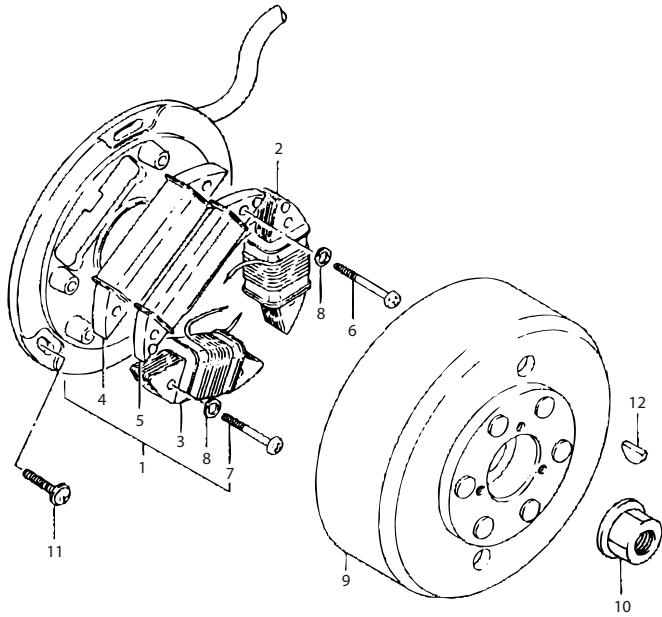
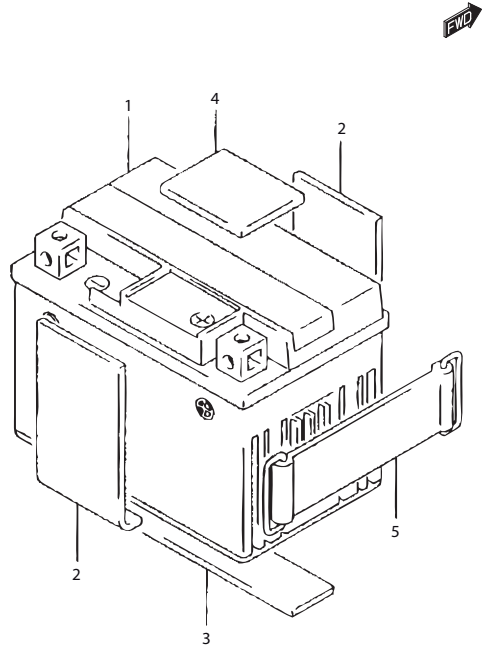


FIG.13 (1-D-2) MAGNETO

REF NO.	PART NO.	DESCRIPTION	QTY	REMARKS
1	32101-29620	STATOR ASSY, 12V	1	
2	32120-29620	·COIL, LIGHTING	1	
3	32130-29620	·COIL, CHARGING	1	
4	32140-32021	·COIL, PRIMARY	1	
5	32150-32020	·COIL, PULSER	1	
6	02112-05357	·SCREW	4	
7	02112-05207	·SCREW	2	
8	08321-01057	·LOCK WASHER	6	
9	32102-29620	ROTOR, 12V	1	
10	09159-14015	NUT	1	
11	02142-0512A	SCREW	3	
12	09420-04008	KEY	1	



**FIG.14**



**FIG.14 (1-D-3) BATTERY**

REF NO.	PART NO.	DESCRIPTION	QTY	REMARKS
1	33610-14D20	BATTERY (12V, 3AH, YT4L-BS)	1	
2	33651-37000	PROTECTOR, BATTERY	2	
3	33651-37000	PROTECTOR, BATTERY	1	
4	33651-37000	PROTECTOR, BATTERY	1	
5	09462-00008	BAND, BATTERY	1	

FIG.15

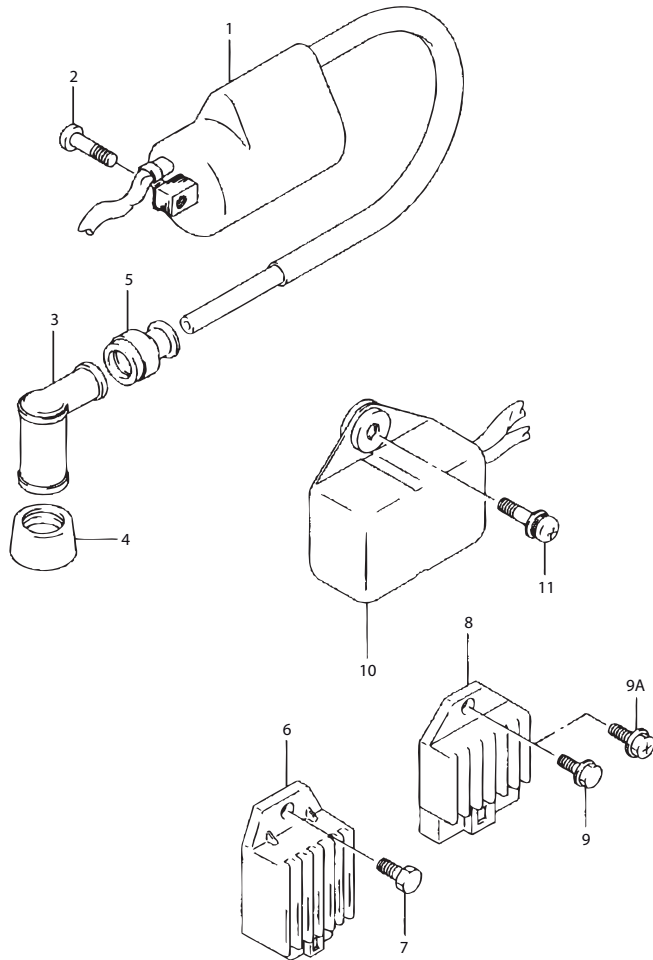


FIG.15 (1-D-4) ELECTRICAL

REF NO.	PART NO.	DESCRIPTION	QTY	REMARKS
1	33410-14120	COIL ASSY, IGNITION	1	
2	02112-05207	SCREW	2	
3	33510-22010	CAP, SPARK PLUG	1	
4	33541-69010	SEAL, SPARK PLUG	1	
5	33542-38B00	SEAL, HIGH TENSION CORD	1	
6	32800-31C21	RECTIFIER ASSY	1	FOR HEADLAMP
7	01500-0612A	BOLT	1	
8	32800-40D10	RECTIFIER ASSY	1	FOR BATTERY
9	01550-0512B	BOLT	1	MODEL T/V
9A	09128-05012	SCREW	1	MODEL W
10	32900-30520	C.D.I UNIT ASSY	1	
11	02112-76203	SCREW	2	

FIG.16

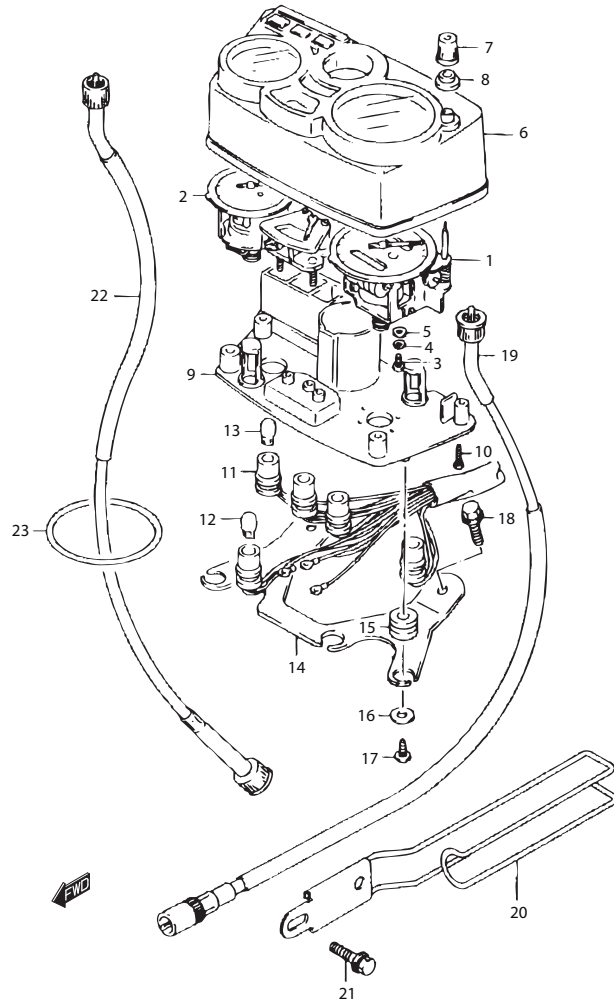


FIG.16 (1-D-5) SPEEDOMETER (P9)

REF NO.	PART NO.	DESCRIPTION	QTY	REMARKS
1	34120-03D10	SPEEDOMETER (KILO)	1	
2	34220-487A0	TACHOMETER	1	
3	02112-21033	SCREW	4	
4	08321-2103B	LOCK WASHER	4	
5	08322-0103B	WASHER	4	
6	34150-487A0	HOOD, METER	1	
7	34124-49910	KNOB TRIP	1	
8	34996-49910	SEAL, TRIP KNOB	1	
9	34111-01A00	CASE, METER	1	
10	03511-03146	SCREW	4	
11	34170-487A0	SOCKET, METER	1	
12	09471-12082	BULB (12V, 3.4W)	4	
13	09471-12077	BULB (12V, 1.7W)	1	
14	34950-48590	BRACKET, METER	1	
15	34955-28010	CUSHION	3	
16	09160-05048	WASHER (5.5X14X1.20)	3	
17	03111-0412A	SCREW	3	
18	01560-06163	BOLT	2	
19	34910-48510	CABLE, SPEEDOMETER	1	
20	34930-05203	GUIDE, CABLE	1	
21	01580-08123	BOLT	2	
22	34940-30902	CABLE, TACHOMETER	1	
23	58642-41300	O RING	1	

FIG.17

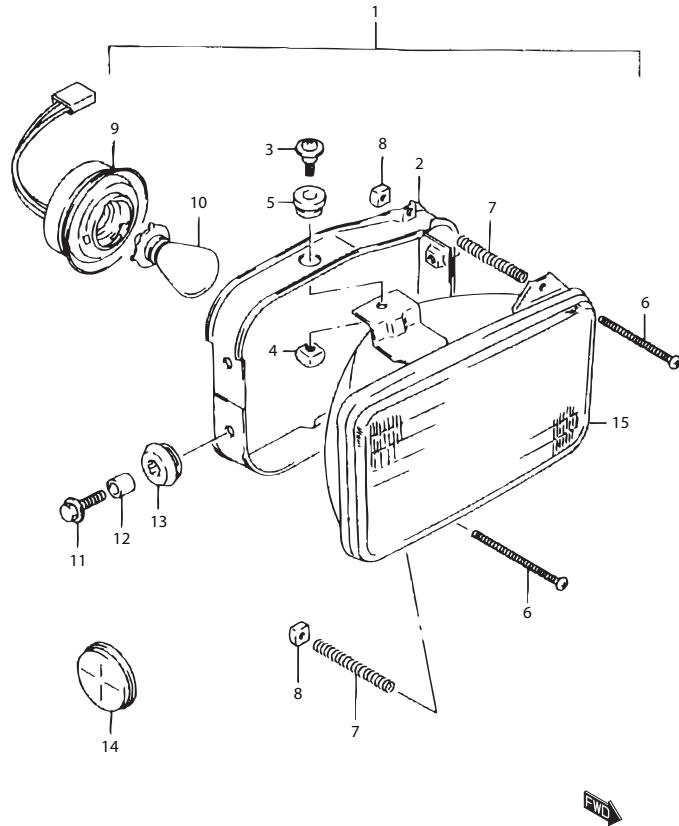


FIG.17 (1-D-6) HEADLAMP (P9)

REF NO.	PART NO.	DESCRIPTION	QTY	REMARKS
1	35100-48791-999	HEADLAMP ASSY	1	
2	35141-14A00	·HOUSING	1	
3	35136-38A00	·SCREW	1	
4	35135-45900	·NUT	1	
5	35139-45230	·CUSHION	1	
6	35151-45900	·ADJUST SCREW	2	
7	35154-49200	·SPRING	2	
8	35135-45600	·NUT	2	
9	35171-01A10	·SOCKET	1	
10	09471-12184	BULB (12V, 25/25W)	1	
11	09116-06167	BOLT	4	
12	09180-06263	SPACER	4	
13	09320-09018	CUSHION	4	
14	35950-30910	REFLECTOR, REFLEX	2	
15	35121-48770	UNIT HEADLAMP	1	

FIG.18

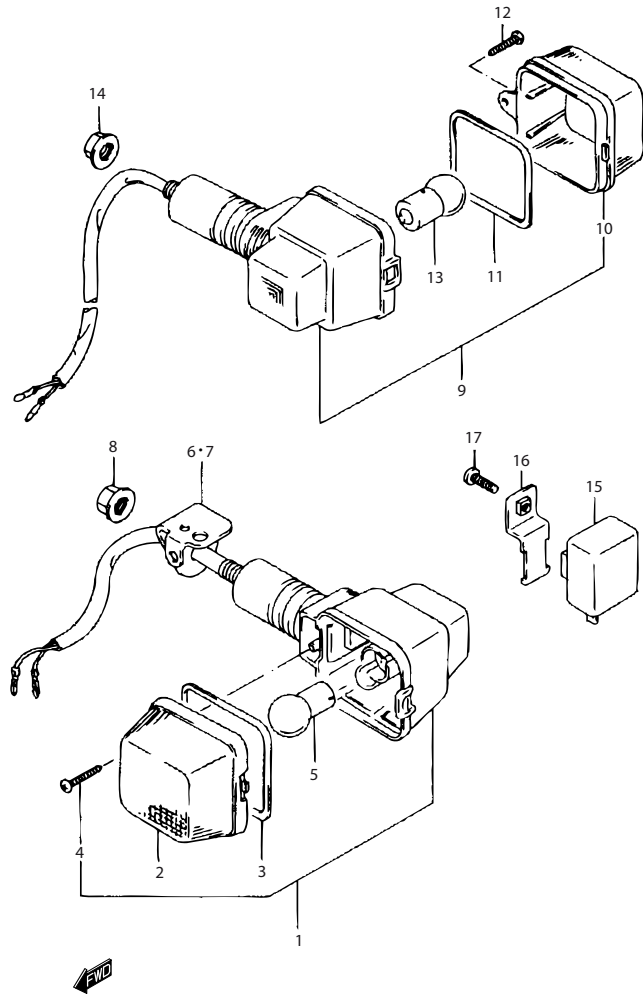


FIG.18 (1-E-2) TURN SIGNAL LAMP (P9)

REF NO.	PART NO.	DESCRIPTION	QTY	REMARKS
1	35603-04A14-999	LAMP ASSY, FRONT TURNSIGNAL	2	
2	35612-01A02	·LENS	2	
3	35613-01A00	·GASKET	2	
4	35625-01A00	·SCREW	2	
5	09471-12006	BULB (12V, 23W)	2	
6	35671-48700-J01	BRACKET, RH	1	
7	35681-48700-J01	BRACKET, LH	1	
8	08316-1010B	NUT	2	
9	35603-01A10	LAMP ASSY, REAR TURNSIGNAL	2	
10	35612-01A02	·LENS	2	
11	35613-01A00	·GASKET	2	
12	35625-01A00	·SCREW	2	
13	09471-12006	·BULB (12V, 23W)	2	
14	08316-1010B	NUT	2	
15	38610-09410	RELAY ASSY, TURNSIGNAL	1	
16	38620-35301	BRACKET	2	
17	02112-36123	SCREW	1	

FIG.19

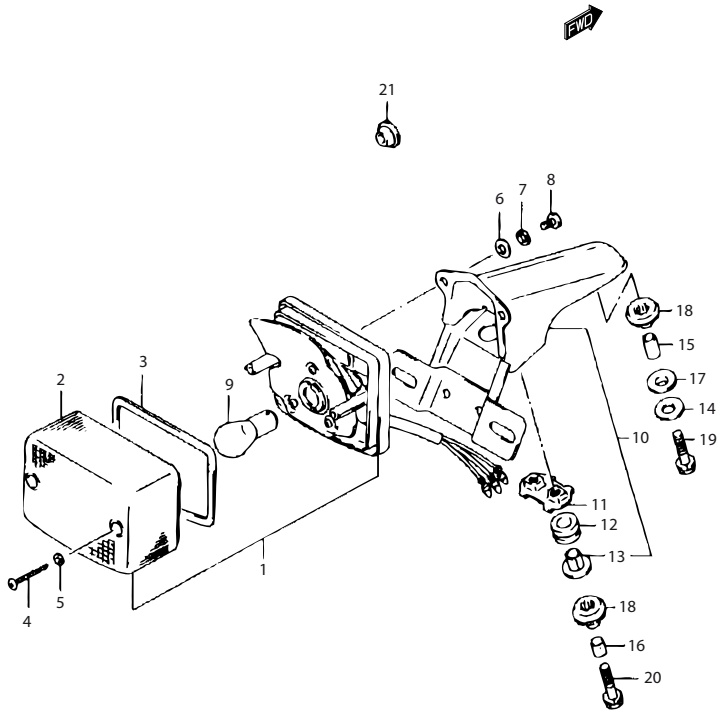


FIG.19 (1-E-3) REAR COMBINATION LAMP

REF NO.	PART NO.	DESCRIPTION	QTY	REMARKS
1	35720-30910-999	LAMP UNIT, REAR COMB	1	
2	35712-48510	·LENS	1	
3	35713-48510	·GASKET	1	
4	03211-04306	·SCREW	2	
5	35627-43010	·GASKET	2	
6	08322-0105A	·WASHER	2	
7	08321-01057	·LOCK WASHER	2	
8	02112-0512A	·SCREW	2	
9	09471-12083	BULB (12V, 21/5W)	1	
10	35730-30910	BRACKET ASSY	1	
11	35716-30950	·PLATE	1	
12	35765-30950	·CUSHION	2	
13	35766-30950	·SPACER	2	
14	09160-06077	WASHER (6.5X20X1.20)	1	
15	09180-06271	SPACER (6.5X9X18)	1	
16	09180-06289	SPACER (6.5X10X11.5)	1	
17	09320-09003	CUSHION	1	
18	09320-09010	CUSHION	3	
19	01570-0630A	BOLT	1	
20	01570-06403	BOLT	2	
21	09308-07004	GROMMET	1	

FIG.20

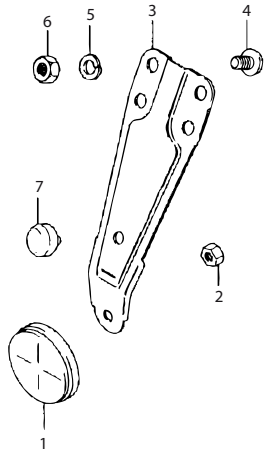


FIG.20 (1-E-4) REFLEX REFLECTOR

REF NO.	PART NO.	DESCRIPTION	QTY	REMARKS
1	35970-30910	REFLEX REFLECTOR REAR	1	
2	08310-0005A	NUT	1	
3	35974-48511	BRACKET	1	
4	02142-0610A	SCREW	2	
5	08321-0106A	LOCK WASHER	2	
6	08310-0006A	NUT	2	
7	09321-05010	CUSHION	1	



FIG.21

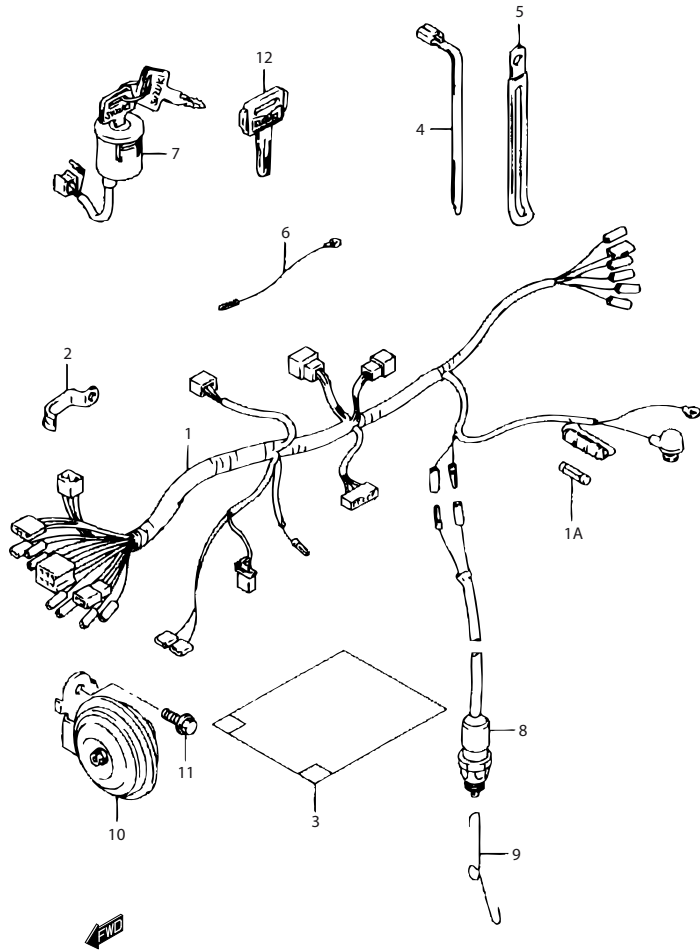


FIG.21 (1-E-5) WIRING HARNESS (P9)

REF NO.	PART NO.	DESCRIPTION	QTY	REMARKS
1	36610-29910	WIRING HARNESS	1	
1A	09481-10001	·FUSE(10A)	1	
2	09403-09307	CLAMP	1	
3	36618-15D20	BOOT	1	
4-1	09407-14403	CLAMP (L: 125)	7	
4-2	09407-25401	CLAMP (L: 235)	3	
5	09404-06432	CLAMP (L: 80)	1	
6	36862-27690	WIRE, BATTERY LEAD (-)	1	
7	37110-29900	SWITCH ASSY, IGNITION	1	
8	37740-48071	SWITCH ASSY, BRAKE LAMP	1	
9	09448-11004	SPRING	1	
10	38500-48551	HORN	1	
11	01560-06103	BOLT	1	
12-1	37146-03A00	KEY, BLANK (TYPE C)	1	OPT
12-2	37146-03A10	KEY, BLANK (TYPE D)	1	OPT
12-3	37146-03A20	KEY, BLANK (TYPE E)	1	OPT
12-4	37146-03A30	KEY, BLANK (TYPE F)	1	OPT

FIG.22

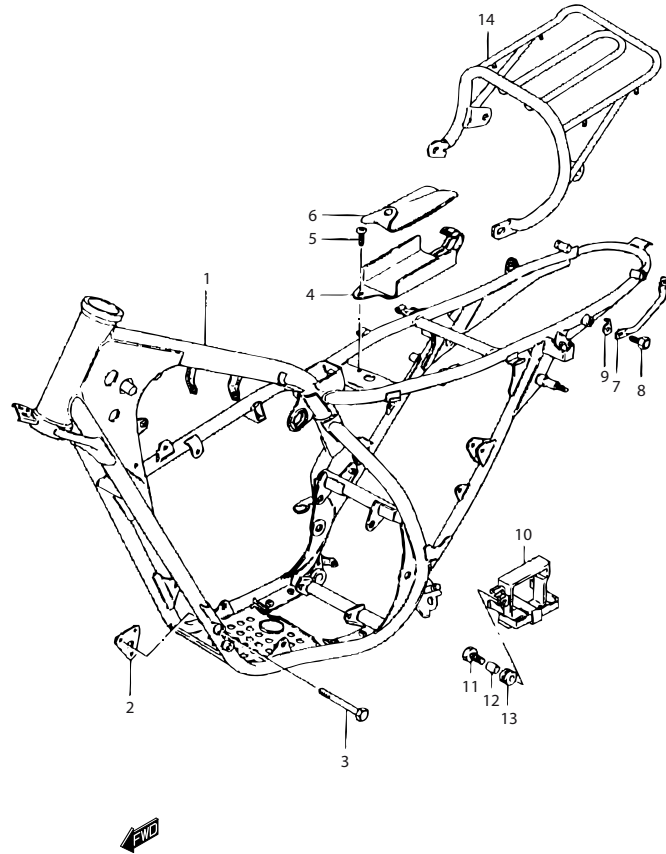


FIG.22 (1-F-2) FRAME

REF NO.	PART NO.	DESCRIPTION	QTY	REMARKS
1-1	41100-29930-019	FRAME (BLACK)	1	TS185ERT
1-2	41100-29940-019	FRAME	1	TS185ERCV P9
1-3	41100-29950-019	FRAME	1	TS185ERW
2	41990-30500	PLATE, ENGINE MOUNTING	1	
3	01550-0855A	BOLT	2	
4	41550-29301	HOLDER, TOOL	1	
5	02142-0610A	SCREW	1	
6	09800-21033	TOOL ASSY	1	
7	41611-48500	GRIP	1	
8	01580-0816A	BOLT	1	
9	95721-30900	HOLDER, HELMET	1	
10	41540-29310	HOLDER, BATTERY	1	
11	09136-06133	BOLT	3	MODEL V/W
12	09180-06259	SPACER	3	MODEL V/W
13	09320-08021	CUSHION	3	
14	46310-48500	CARRIER, SPORT	1	OPT

FIG.23

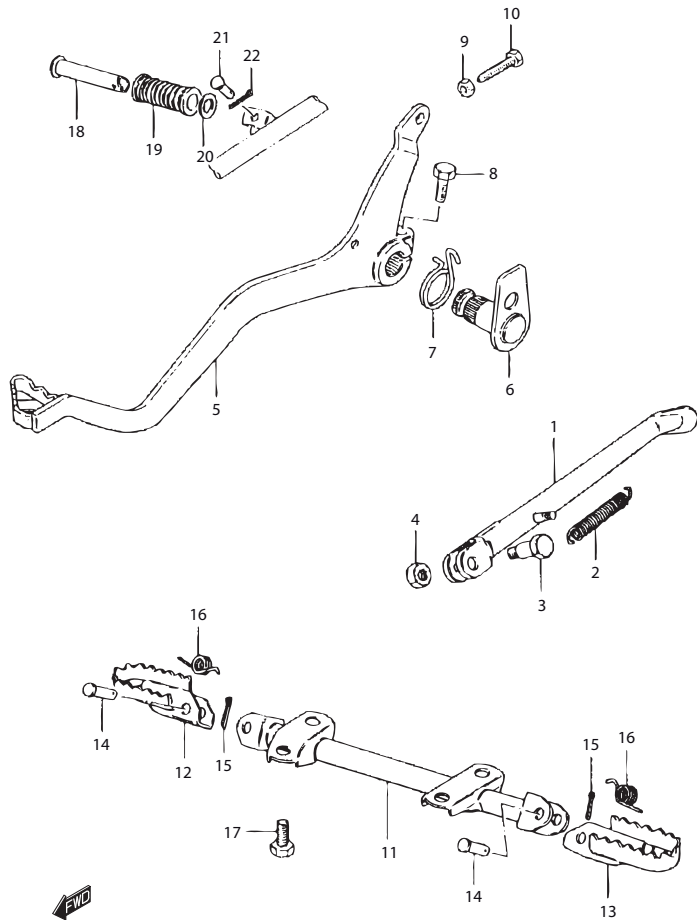
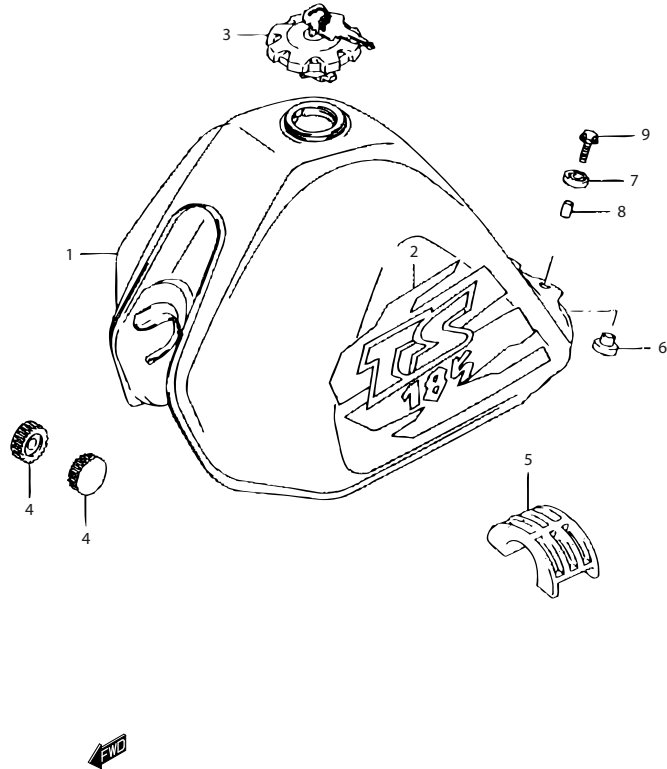


FIG.23 (1-F-3) STAND

REF NO.	PART NO.	DESCRIPTION	QTY	REMARKS
1-1	42310-48500	STAND, PROP	1	TS185ERCV P9
1-2	42310-48550	STAND, PROP	1	TS185ERW
2	09443-14017	SPRING	1	MODEL V/W
3-1	09100-10501	BOLT	1	TS185ERCV P9
3-2	09111-10047	BOLT	1	TS185ERW
4-1	09140-10043	NUT	1	TS185ERCV P9
4-2	09159-10097	NUT	1	TS185ERW
5	43110-48210	PEDAL, BRAKE	1	
6	43120-48210	ARM, BRAKE PEDAL	1	
7	09448-25001	SPRING	1	
8	01500-0620A	BOLT	1	
9	08310-0006A	NUT	1	
10	09100-06009	BOLT, ADJUSTER	1	
11	43510-29303	BAR, FRONT FOOTREST	1	
12	43550-29300	FOOTREST, RH	1	
13	43560-29300	FOOTREST, LH	1	
14	09200-10008	PIN	2	
15	04111-2015A	COTTER PIN	2	
16	09448-15004	SPRING	2	
17	01580-0820A	BOLT	4	
18	43610-03001	BAR, PILLION FOOTREST	2	
19	43612-03001	RUBBER	2	
20	09160-19024	WASHER (19.5X32X2)	2	MODEL V/W
21	09200-06033	PIN	2	
22	04111-2015A	COTTER PIN	2	

**FIG.24**



**FIG.24 (1-F-4) FUEL TANK**

REF NO.	PART NO.	DESCRIPTION	QTY	REMARKS
1	44110-44AA1-799	TANK, FUEL	1	
2-1	68120-29900-Y5Y	TAPE SET, FUEL TANK	1	FOR 14C
2-2	68120-29900-Y5Z	TAPE SET, FUEL TANK	1	FOR 21C
2-3	68120-29900-Y5V	TAPE SET, FUEL TANK	1	FOR 30H
2-4	68120-29900-Y5W	TAPE SET, FUEL TANK	1	FOR 0NF
3	44200-12851	CAP SET, FUEL TANK	1	
4	09329-10007	CUSHION	2	
5	44541-13600	CUSHION, FUEL TANK UPPER	1	
6	09320-10020	CUSHION, LOWER	2	
7	09320-14013	CUSHION, UPPER	2	
8	09180-06271	SPACER (6.5X9X18)	2	
9	01570-0630A	BOLT	2	

FIG.25

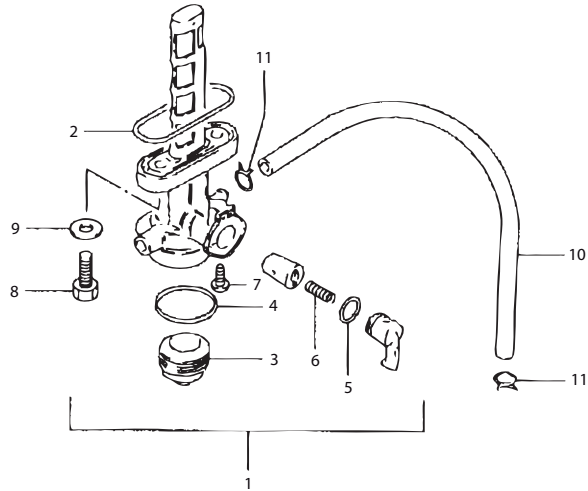


FIG.25 (1-F-5) FUEL COCK

REF NO.	PART NO.	DESCRIPTION	QTY	REMARKS
1	44300-38203	COCK ASSY, FUEL	1	
2	44348-28070	·O RING, JOINT	1	
3	44347-28071	·CUP	1	
4	44346-28070	·O RING, CUP	1	
5	44353-12C01	·GASKET, LEVER	1	
6	44357-32470	·SPRING	1	
7	44343-41370	·SCREW	1	
8	09128-06057	BOLT	2	
9	09168-06026	GASKET	2	
10	09355-50105-600	HOSE, FUEL (L: 600→230)	1	
11	09401-10402	CLIP	2	



FIG.26

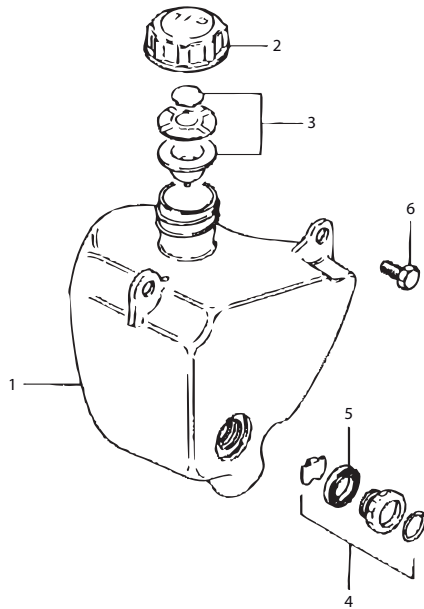


FIG.26 (1-F-6) OIL TANK

REF NO.	PART NO.	DESCRIPTION	QTY	REMARKS
1	44611-29301	TANK, OIL	1	
2	44651-05003	CAP, OIL TANK	1	
3	44600-30832	GASKET SET, OIL TANK	1	
4	44600-46810	LENS SET, OIL LEVEL	1	
5	44643-31000	GASKET	1	
6	09116-06006	BOLT	3	

FIG.27

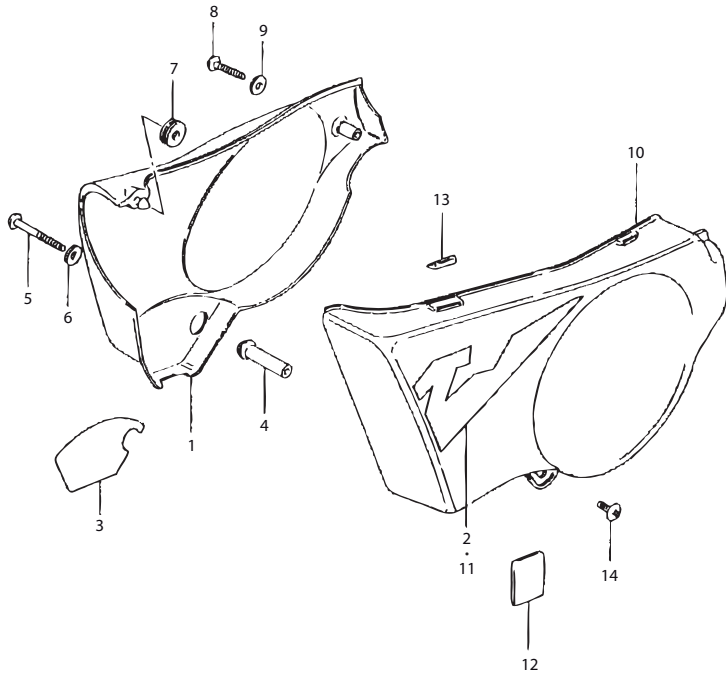


FIG.27 (1-F-7) FRAME COVER

REF NO.	PART NO.	DESCRIPTION	QTY	REMARKS
1-1	47111-29910-14C	COVER, FRAME RH (RED)	1	TS185ERCV
1-2	47111-29910-019	COVER, FRAME RH (BLACK)	1	TS185ERCV
1-3	47111-29910-30H	COVER, FRAME RH (WHITE)	1	
1-4	47111-29910-0NF	COVER, FRAME RH (BLUE)	1	
2-1	68135-29910-J9M	TAPE, RH	1	FOR 14C
2-2	68135-29910-J9N	TAPE, RH	1	FOR 019
2-3	68135-29910-J8L	TAPE, RH	1	FOR 30H
2-4	68135-29910-J8M	TAPE, RH	1	FOR 0NF
3	68131-29990	EMBLEM	1	
4	47112-29910	SPACER, RH	1	
5	02142-06307	SCREW, LOWER RH	1	
6	09160-06084	WASHER	1	
7	09320-08018-000	CUSHION	1	
8	02142-06307	SCREW, UPPER RH	1	
9	09160-06084	WASHER	1	
10-1	47211-29910-14C	COVER, FRAME LH (RED)	1	TS185ERCV
10-2	47211-29910-019	COVER, FRAME LH (BLACK)	1	TS185ERCV
10-3	47211-29910-30H	COVER, FRAME LH (WHITE)	1	TS185ERCV
10-4	47211-29910-0NF	COVER, FRAME LH (BLUE)	1	TS185ERCV
10-5	47211-29900-30H	COVER, FRAME LH (WHITE)	1	TS185ERW
10-6	47211-29900	COVER, FRAME LH (BLUE)	1	TS185ERW
11-1	68145-29910-J9M	TAPE, LH	1	FOR 14C
11-2	68145-29910-J9N	TAPE, LH	1	FOR 019
11-3	68145-29910-J8L	TAPE, LH	1	FOR 30H
11-4	68145-29910-J8M	TAPE, LH	1	FOR 0NF
12	33652-36100	CUSHION	1	TS185ERCV
13	47117-45000	CUSHION, UPPER LH	2	
14	09136-06002	SCREW, LH	1	

FIG.28

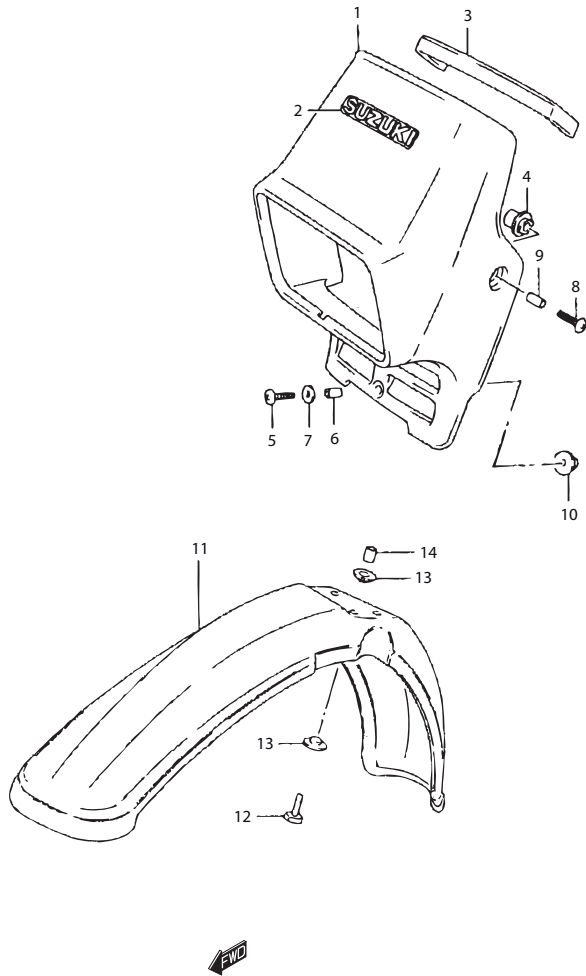


FIG.28 (1-G-2) HEADLAMP COVER

REF NO.	PART NO.	DESCRIPTION	QTY	REMARKS
1-1	51811C01A00HROJ	COVER, HEADLAMP (RED)	1	
1-2	51811C01A00HNGR	COVER, HEADLAMP (BLACK)	1	
1-3	51811C01A00HBLC	COVER, HEADLAMP (WHITE)	1	
1-4	51811C01A00HAZL	COVER, HEADLAMP (BLUE)	1	
2-1	68171-44B00-88C	· EMBLEM	1	FOR 14C
2-2	68171-44B00-H9J	· EMBLEM	1	FOR 21C
2-3	68171-44B00-C5Z	· EMBLEM	1	FOR 30H
2-4	68171-44B00-J9P	· EMBLEM	1	FOR 0NF
3	51827-01A00	· CUSHION	1	
4	51821C01A00H000	· SPACER	2	
5	02142-06357	SCREW, FRONT	1	
6	09180-06249	SPACER	1	
7	09160-06126	WASHER	1	
8	09125-06055	SCREW, SIDE	2	
9	09180-06251	SPACER	2	
10	09180-06243	SPACER, REAR	1	
11-1	53111-48200-14C	FENDER, FRONT (RED)	1	
11-2	53111-48200-21C	FENDER, FRONT (BLACK)	1	
11-3	53111-48200-30H	FENDER, FRONT (WHITE)	1	
11-4	53111-48200-0NF	FENDER, FRONT (BLUE)	1	
12	01550-0635A	BOLT	4	
13	09169-06053	WASHER	8	
14	09180-06195	SPACER, UPPER	4	



FIG.29

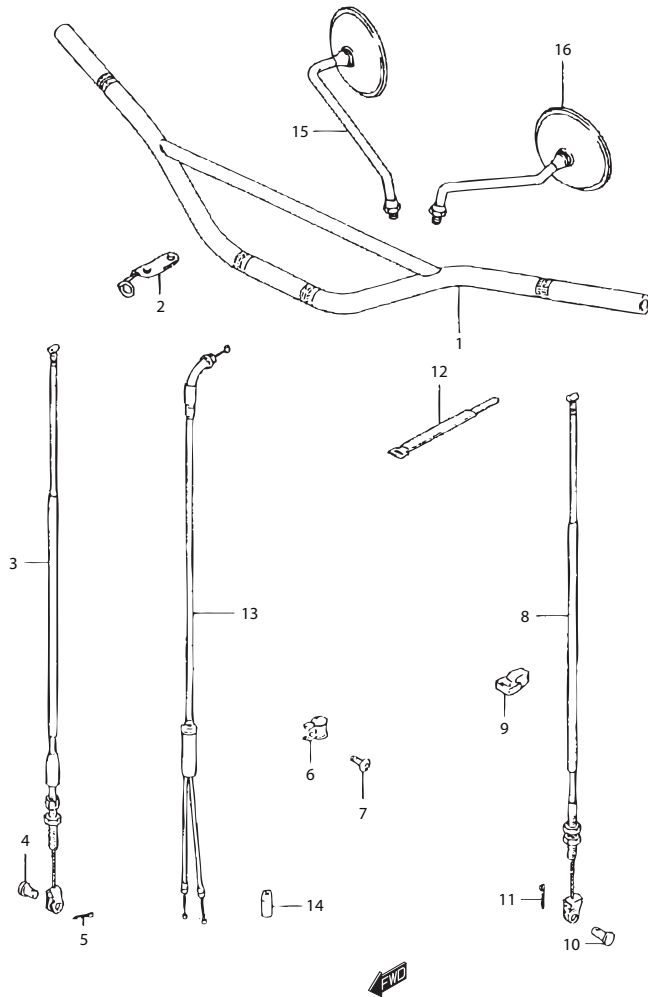


FIG.29 (1-G-3) HANDLEBAR

REF NO.	PART NO.	DESCRIPTION	QTY	REMARKS
1	56110-29405-13L	HANDLEBAR (SILVER)	1	
2	58620-48760	GUIDE, CABLE	1	
3	58110-29303	CABLE, FRONT BRAKE	1	
4	09200-06013	PIN	1	
5	04111-2015A	COTTER PIN	1	
6	58621-14201	GUIDE	1	
7	01550-0610A	BOLT	1	
8	58200-46090	CABLE ASSY, CLUTCH	1	
9	58621-29301	GUIDE, CLUTCH CABLE	1	
10	09200-06004	PIN	1	
11	04111-2015A	COTTER PIN	1	
12	09407-18403	CLAMP (L: 180)	1	
13	58300-29502	CABLE ASSY, THROTTLE	1	
14	09287-07002	DUST SEAL	1	
15	56500-45012	MIRROR ASSY, REAR VIEW RH	1	
16	56600-45013	MIRROR ASSY, REAR VIEW LH	1	



FIG.31

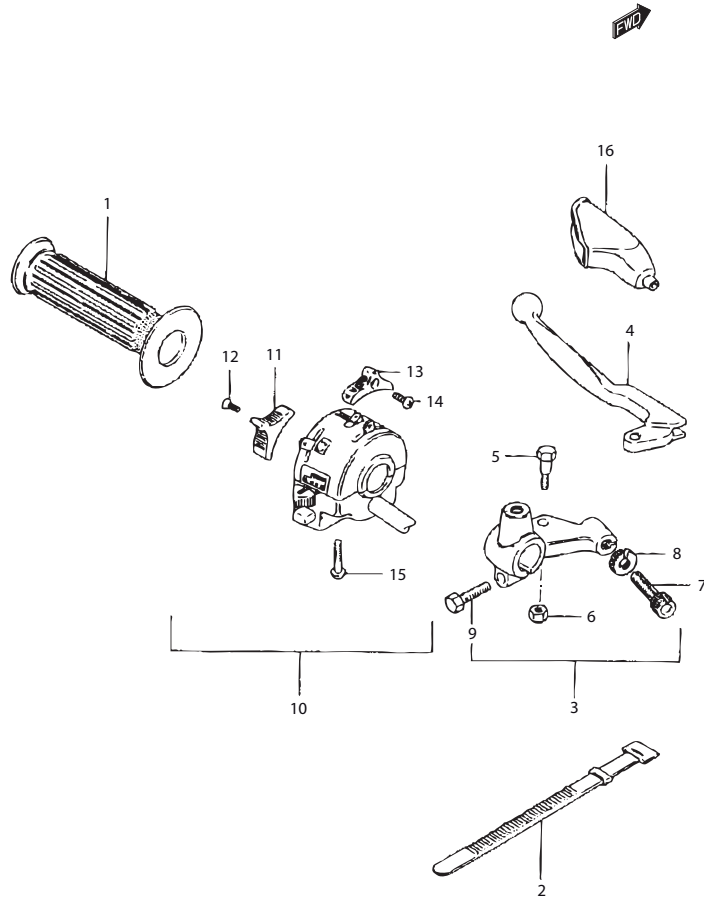


FIG.31 (1-G-5) LEFT HANDLE LEVER

REF NO.	PART NO.	DESCRIPTION	QTY	REMARKS
1	57211-45020	GRIP, LH	1	
2	09407-12402	BAND (L: 120)	1	
3	57500-48500	LEVER ASSY, CLUTCH	1	
4	57620-48701	·LEVER, CLUTCH	1	
5	57431-11013	·BOLT	1	
6	08319-2106A	·NUT, PIVOT	1	
7	57441-26010	·ADJUSTER, CABLE	1	
8	57442-11010	·NUT	1	
9	01500-06207	·BOLT	1	
10	37400-32402	SWITCH ASSY, HANDLE LH	1	
11	37421-45012	·KNOB, DIMMER	1	
12	02122-03067	·SCREW	1	
13	37411-45012	·KNOB, LIGHTING	1	
14	02122-03067	·SCREW	1	
15	02112-0525A	·SCREW	2	
16	57341-40002	COVER, CLUTCH LEVER	1	

FIG.32

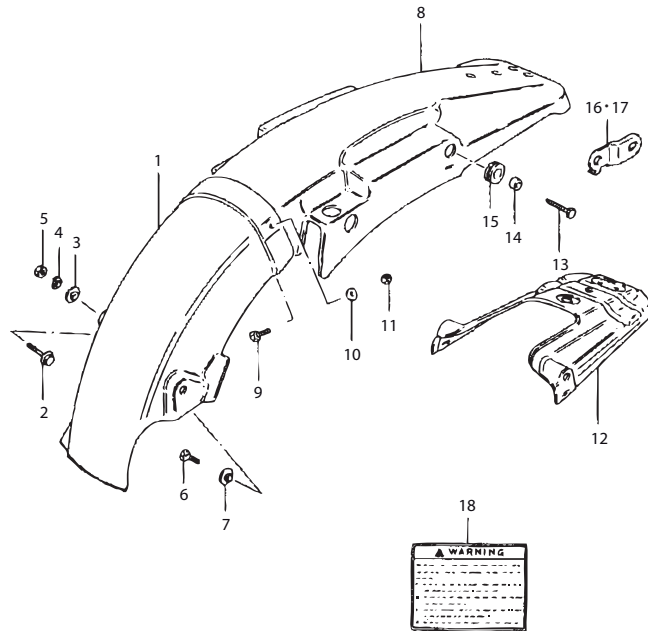


FIG.32 (1-G-6) REAR FENDER

REF NO.	PART NO.	DESCRIPTION	QTY	REMARKS
1	63112-29911	BODY, REAR FENDER FRONT	1	
2	01550-0616A	BOLT, LH	1	
3	09169-06010	WASHER	1	
4	08321-0106A	LOCK WASHER	1	
5	08361-3506A	NUT	1	
6	01570-0612A	BOLT, LH	1	
7	09169-06010	WASHER	1	
8-1	63113-48200-14C	FENDER, REAR (RED)	1	TS185ERCV
8-2	63113-48200-019	FENDER, REAR (BLACK)	1	TS185ERCV
8-3	63113-48200-30H	FENDER, REAR (WHITE)	1	
8-4	63113-48501-13L	FENDER, REAR (BLUE)	1	
9	09116-05020-000	BOLT, CENTER	2	
10	09160-05037	WASHER	2	
11	08319-21057	NUT	2	
12	63120-48501	REINFORCEMENT	1	
13	01570-0830A	BOLT, REAR	2	
14	09180-08188	SPACER	2	
15	09320-12011	CUSHION	2	
16-1	41580-48530	BRACKET, REAR TURN RH	1	TS185ERCV
16-2	41580-46530	BRACKET, REAR TURN RH	1	TS185ERW
17-1	41590-48530	BRACKET, REAR TURN LH	1	TS185ERCV
17-2	41590-46530	BRACKET, REAR TURN LH	1	TS185ERW
18-1	68319-33E51	LABEL, SAFETY (SPANISH)	1	TS185ERCV
18-2	68319-33E00	LABEL, SAFETY (ENGLISH)	1	TS185ERW
19	99011-29931-01S	MANUAL, OWNER'S	1	DRAWING NOT SHOWN

FIG.33

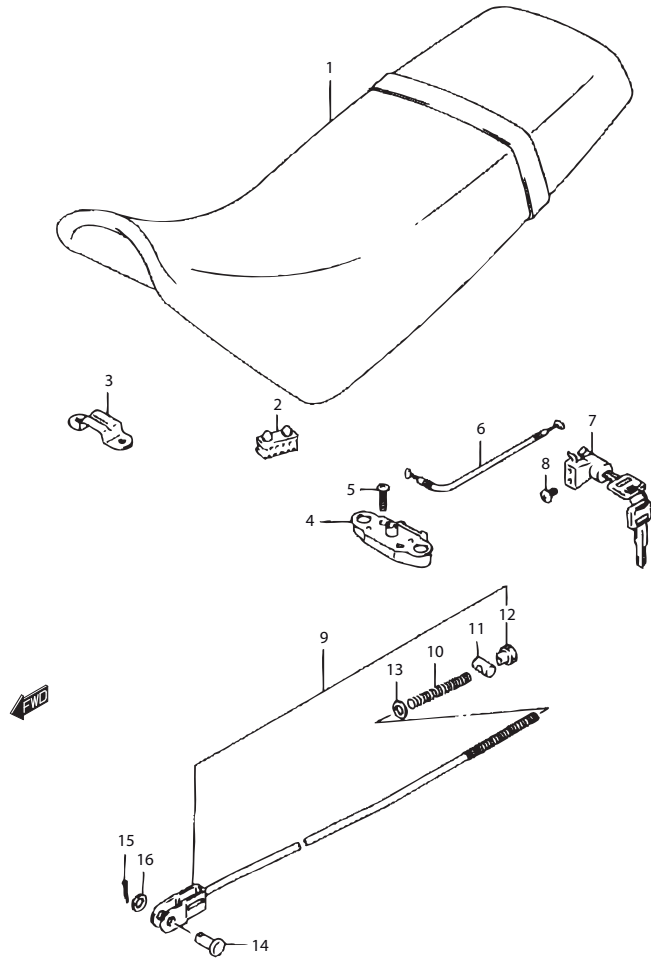


FIG.33 (1-G-7) SEAT

REF NO.	PART NO.	DESCRIPTION	QTY	REMARKS
1	45100-29950	SEAT ASSY (BLACK)	1	
2	45149-31300	·CUSHION	1	
3	45119-48760	PLATE, SEAT HOOK	1	
4	45220-20A01	BRACKET, SEAT	1	
5	02122-06303	SCREW	2	
6	45280-33400	CABLE, SEAT LOCK	1	
7	95700-31C00	LOCK ASSY, SEAT	1	
8	02142-0510A	SCREW	2	
9	43300-29910	ROD ASSY, REAR BRAKE	1	
10	09440-09004	·SPRING	1	
11	09209-13018	·PIN	1	
12	09150-06014	·NUT	1	
13	08322-0106B	·WASHER	1	
14	09200-06013	·PIN	1	
15	04111-2020A	·COTTER PIN	1	
16	08322-0106B	·WASHER	1	

FIG.34

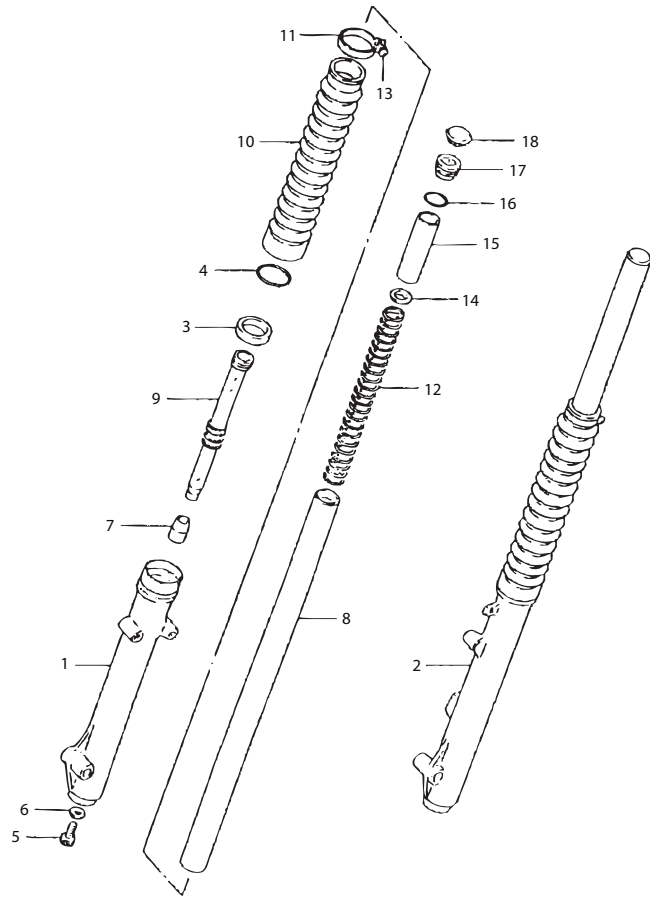


FIG.34 (1-H-2) FRONT DAMPER

REF NO.	PART NO.	DESCRIPTION	QTY	REMARKS
	51103-29920	DAMPER ASSY, FRONT FORK RH	1	
	51104-29920	DAMPER ASSY, FRONT FORK LH	1	
1	51130-29920	·TUBE, OUTER RH	1	
2	51140-29920	·TUBE, OUTER LH	1	
3	51153-29420	·OIL SEAL	2	
4	51156-29420	·SNAP RING	2	
5	51147-16510	·BOLT	2	
6	51148-41310	·GASKET	2	
7	51195-36220	·PIECE, OIL LOCK	2	
8	51110-29420	·TUBE, INNER	2	
9	51146-29920	·CYLINDER	2	
10	51571-29420-019	·BOOT	2	
11	51575-29420	·BAND	2	
12	51171-29420	·SPRING	2	
13	02112-0416A	·SCREW	2	
14	51172-18630	·GUIDE, SPRING	2	
15	51176-48070	·SPACER	2	
16	51181-29400	·O RING	2	
17	51351-29320	·CAP	2	
18	51189-29400	·CAP	2	

FIG.35

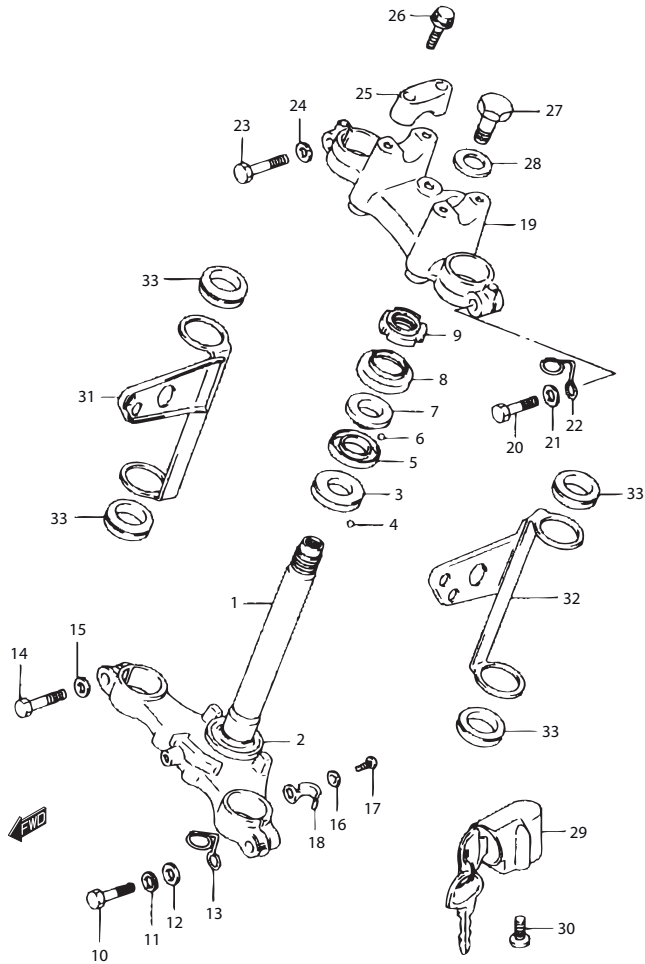


FIG.35 (1-H-3) STEERING STEM

REF NO.	PART NO.	DESCRIPTION	QTY	REMARKS
1	51410-29930-08C	STEM, STEERING (GOLD)	1	
2	51621-33001	· OUTER, RACE	1	
3	51611-33002	RACE, INNER LOWER	1	
4	06111-08003	STEEL, BALL	18	
5	51611-20002	RACE, INNER UPPER	1	
6	06111-06003	STEEL, BALL	22	
7	51621-28000	RACE, OUTER UPPER	1	
8	51643-25001	DUST SEAL	1	
9	51631-28000	NUT, STEERING STEM	1	
10	01500-12457	BOLT	1	
11	08321-01127	LOCK WASHER	1	
12	08322-01127	WASHER	1	
13	51452-29960	CLIP	1	
14	01500-1240B	BOLT	1	
15	08321-01127	LOCK WASHER	1	
16	08321-0106A	LOCK WASHER	1	
17	02112-06103	SCREW	1	
18	51453-05110	CLIP	1	
19	51311-29920-08C	HEAD, STEERING STEM (GOLD)	1	
20	01500-10407	BOLT	1	
21	09160-10123	WASHER	1	
22	51455-29330	CLIP	1	
23	01500-10407	BOLT	1	
24	08321-01107	LOCK WASHER	1	
25	56211-29320-291	HOLDER, HANDLE	2	
26	51321-27C20	BOLT	4	
27	51351-29400	BOLT	1	
28	51356-22012	WASHER	1	
29	51900-24820	LOCK SET, STEERING	1	
30	02112-35123	SCREW	2	
31	51530-29960	BRACKET, HOUSING RH	1	
32	51540-29960	BRACKET, HOUSING LH	1	
33	51553-44000	CUSHION, BRACKET	4	

FIG.36

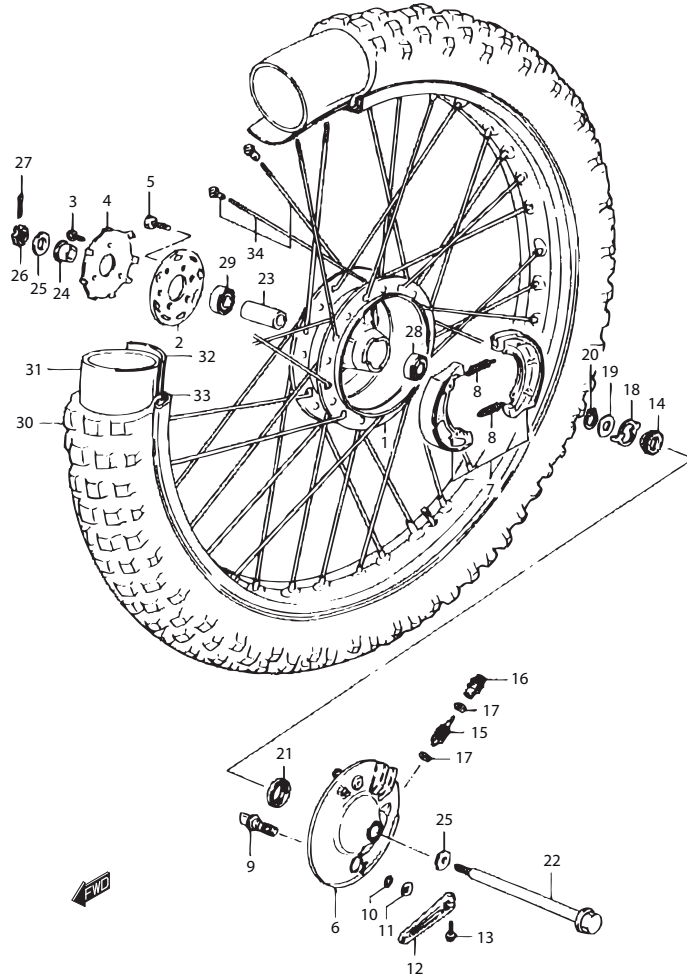


FIG.36 (1-H-4) FRONT WHEEL

REF NO.	PART NO.	DESCRIPTION	QTY	REMARKS
1	54110-29300	HUB, FRONT WHEEL	1	
2	54112-30500	FLANGE, FRONT HUB RH	1	
3	02122-0616A	SCREW	3	
4	54151-30500	RETAINER, HUB BEARING RH	1	
5	01570-06163	BOLT	3	
6	54210-48502	PANEL, FRONT BRAKE ANCHOR	1	
7	54400-07880	SHOE SET, BRAKE	1	
8	09443-07044	SPRING	2	
9	54441-48502	CAM, BRAKE	1	
10	09280-14011	DUST SEAL (ID: 13.8, D: 2.50)	1	
11	09160-14055	WASHER	1	
12	54451-32401	LEVER, BRAKE CAM	1	
13	01500-0625A	BOLT	1	
14	54611-28402	GEAR, SPEEDOMETER (NT: 27)	1	
15	54621-28401	PINION, SPEEDOMETER (NT: 9)	1	
16	54632-02201-000	BUSH, PINION OUTER	1	
17	09160-05001-A05	THRUST WASHER (6.1X9X0.4)	2	
18	54661-29300	DRIVER, METER GEAR	1	
19	09160-18002	THRUST WASHER (18.5X24X1)	1	
20	08331-3118A	CIRCLIP	1	
21	09283-43004	OIL SEAL (43X58X7)	1	
22	54711-16504	AXLE, FRONT	1	
23	09180-12144	SPACER (12.5X19X52)	1	
24	54741-41100	SPACER, RH (12.2X19X18.5)	1	
25	08322-0112B	WASHER	2	
26	09141-12004	NUT	1	
27	04111-3030A	COTTER PIN	1	
28	08143-62017	BEARING, LH	1	
29	08133-62017	BEARING, RH	1	
30	55100-48500-PIR	TIRE, FRONT (2.75-21) RC	1	
31	55200-16510-PIR	TUBE ASSY, WHEEL INNER	1	
32	55261-14540	PROTECTOR, INNER TUBE	1	
33	55311-48020	RIM, FRONT WHEEL (1.60X21)	1	
34	55320-29300	SPOKE SET, FRONT WHEEL	1	



FIG.37

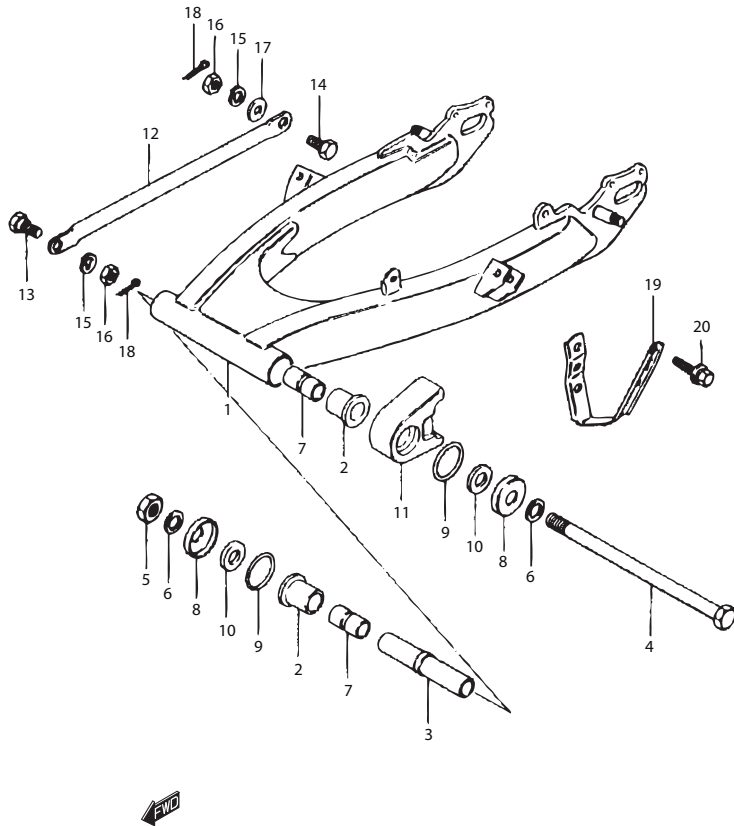


FIG.37 (1-H-5) REAR SWINGING ARM

REF NO.	PART NO.	DESCRIPTION	QTY	REMARKS
1	61100-29902	SWINGING ARM, REAR	1	
2	09307-18002	BUSHING	2	
3	61280-29300	SPACER, CENTER	1	
4	61211-29302	SHAFT, REAR SWINGING ARM	1	
5	08319-2112A	NUT	1	
6	08322-0112B	WASHER	2	
7	61251-28000	SPACER, PIVOT	2	
8	61262-09200	COVER, PIVOT DUST	2	
9	09280-24003-000	DUST SEAL (ID: 24.5, D: 3.0)	2	
10	09160-12005	THRUST WASHER (12.5X24X2.3)	2	
11	61273-29902	BUFFER, CHAIN TOUCH DEFENSE	1	
12-1	64311-28000-13L	TORQUE LINK, REAR (SILVER)	1	
12-2	64311-28000	TORQUE LINK, REAR	1	
13	09111-08015	BOLT, FRONT (8X22)	1	
14	09111-08013	BOLT, REAR (8X26.5)	1	
15	08321-0108A	LOCK WASHER	2	
16	09140-08008	NUT	2	
17	08322-0108B	WASHER, REAR	1	
18	04111-2020A	COTTER PIN	2	
19	61341-48504	GUIDE, CHAIN	1	
20	01580-08123	BOLT (8X12)	2	

FIG.38

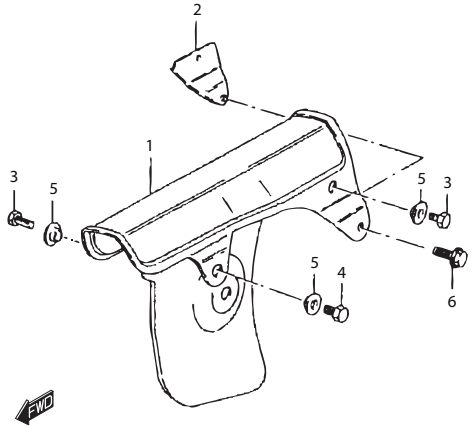
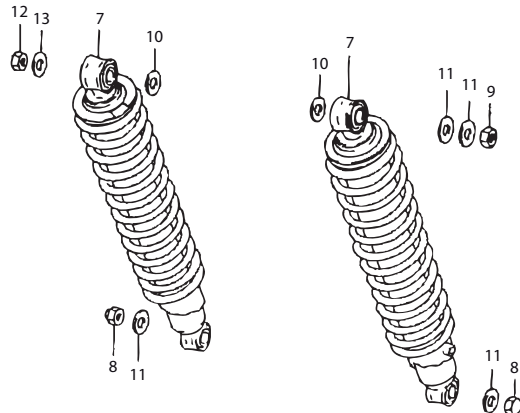


FIG.38 (1-H-6) REAR SHOCK ABSORBER

REF NO.	PART NO.	DESCRIPTION	QTY	REMARKS
1	61311-29900	CASE, CHAIN (BLACK)	1	
2	61380-29900	REINFORCEMENT, CASE	1	
3	01500-0610B	BOLT (6X10)	2	
4	01500-0610B	BOLT, FRONT	1	
5	09169-06010	WASHER	3	
6	01550-0616A	BOLT, REAR	1	
7	62100-29901	ABSORBER ASSY, REAR SHOCK	2	
8	08313-10107	NUT	2	
9	08310-0010B	NUT, UPPER LH	1	
10	08322-01127	WASHER	2	
11	09160-10093	WASHER (10.5X24X2.3)	4	
12	08310-00123	NUT, UPPER RH	1	
13	09160-12082	WASHER, UPPER RH (12.5X24X3.2)	1	

FIG.39

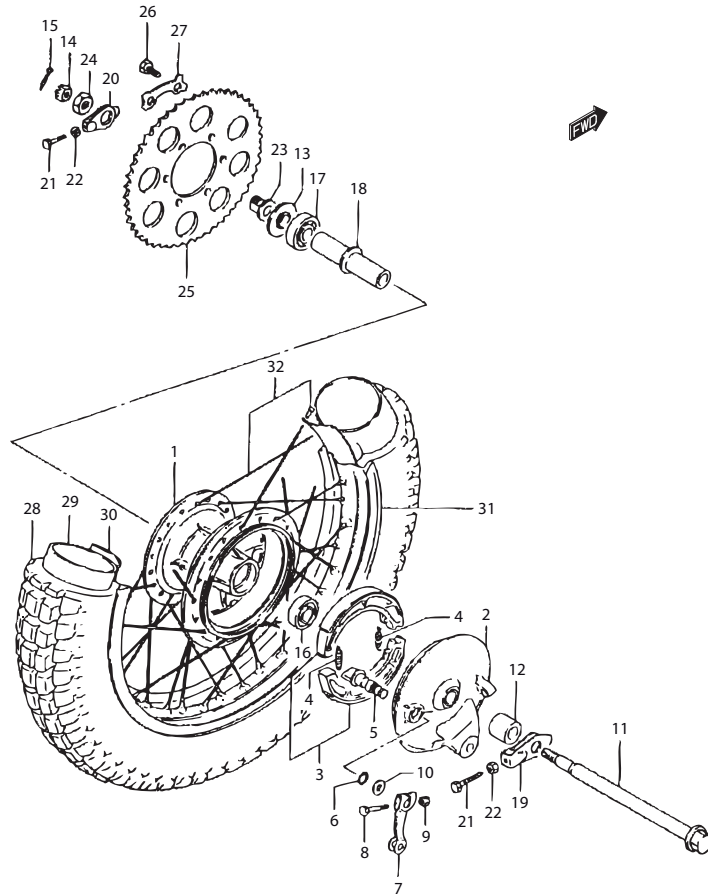


FIG.39 (1-H-7) REAR WHEEL

REF NO.	PART NO.	DESCRIPTION	QTY	REMARKS
1	64110-38002	HUB, REAR WHEEL	1	
2	64210-48000	PANEL, REAR BRAKE ANCHOR	1	
3	54400-07880	SHOE SET, BRAKE	1	
4	09443-07044	SPRING	2	
5	54441-29305	CAM, REAR BRAKE	1	
6	09280-14011	DUST SEAL (ID: 13.8, D: 2.50)	1	
7	64451-30501	LEVER, BRAKE CAM	1	
8	01550-0640B	BOLT	1	
9	08316-1006B-000	NUT	1	
10	09160-14055	WASHER (14.5X22X1.6)	1	
11	64711-29301	AXLE, REAR	1	
12	09180-15038	SPACER, RH (15.2X22X26)	1	
13	64750-29300	SPACER, LH	1	
14	09141-12004	NUT	1	
15	04111-3030A	COTTER PIN	1	
16	08143-62027	BEARING, RH	1	
17	08123-63027	BEARING, LH	1	
18	64730-28001	SPACER, REAR HUB BEARING	1	
19	61410-28004	ADJUSTER, CHAIN RH	1	
20	61420-28003	ADJUSTER, CHAIN LH	1	
21	09100-08146	BOLT (8X40)	2	
22	08310-00087	NUT	2	
23	64791-28001	SPACER, CHAIN ADJUSTER LH	1	
24	09140-18501	NUT	1	
25	64511-29000	SPROCKET, REAR (NT: 39)	1	
26	09100-08094	BOLT (8X34)	6	
27	09169-08013	WASHER	3	
28	65100-48500-PIR	TIRE, REAR (4.10-18) IRC	1	
29	65200-44AA0-PIR	TUBE ASSY, WHEEL INNER	1	
30	55261-11010	PROTECTOR, INNER TUBE	1	
31	65311-48500	RIM, REAR WHEEL (1.85-18)	1	
32	65320-28021	SPOKE SET, REAR WHEEL	1	

# PARTS NUMBER INDEX

PART NO.	FIG.NO. - REF.NO.	PART NO.	FIG.NO. - REF.NO.	PART NO.	FIG.NO. - REF.NO.	
10000		13370-30941	5-8	21460-28000	9-11	
		13373-39110	5-10	23165-28001	9-12	
		13382-03110	5-12	23261-28300	9-15	
		13382-47010	5-17	23271-29300	9-19	
		13383-30910	5-22	24121-29004	10-1	
	11111-29304	1-1	13387-47010	5-19	24131-28001	10-7
	11141-29900	1-2	13388-47010	5-16	24221-28001	10-2
	11210-29901	1-7	13394-10010	5-18	24231-28003	10-3
	11241-29310	1-9	13424-33110	5-27	24241-28001	10-4
	11251-11300	1-14	13523-46110	5-32	24250-28000	10-5
	11251-11300	1-15	13551-30910	5-15	24310-28000	10-8
	11251-30530	1-5	13573-30900	5-23	24321-28001	10-9
	11300-29900	2-1	13577-48110	5-25	24331-28002	10-10
	11341-29900	3-1	13581-30910	5-20	24341-28003	10-11
	11351-29301	3-9	13661-16600	5-24	24351-28002	10-12
	11380-27300	8-17	13681-16601	5-26	24741-28001	10-23
	11400-29865	1-25	13684-40A00	5-37	25211-28002	11-1
11451-29900	3-7	13700-29312	6-1	25221-28002	11-2	
11481-29310	2-2	13771-29310	6-4	25231-28003	11-3	
11482-29310	3-2	13780-29310	6-2	25311-29301	11-7	
12100-29900-050	4-23-1	13781-29310	6-3	25322-28030	11-10	
12100-29900-100	4-23-2	13789-28010	6-5	25340-12101	11-12	
12105-29811	4-24	13790-29310	6-6	25350-28001	11-15	
12110-29900	4-1	13881-29910	6-9	25351-39300	11-19	
12140-29010	4-2	14181-28080	7-1	25352-11010	11-22	
12151-60D00	4-3	14182-28000	7-2	25370-12101	11-14	
12161-41500	4-7	14184-28011	7-3	25411-05100	11-23	
12200-29602	4-6	14301-29910-H01	7-6	25510-29300	11-24	
12211-29001	4-9	14303-29900	7-9	25600-29310	11-36	
12221-29600	4-11	14510-30500	7-10	25671-19000	11-29	
12261-29602	4-12	14771-43D00	7-20	26211-28301	12-1	
12511-29100	4-13	14772-30500	7-12	26221-23030	12-2	
12521-28002	2-18	14781-29900	7-26	26222-28300	12-3	
13110-30900	1-22	16100-29911	8-1	26231-20000	12-4	
13150-41113	1-16	16292-03112	8-6	26232-01000	12-7	
13152-41110	1-17	16391-05031	8-2	26240-29300	12-9	
13153-41110	1-18	16731-03101	8-3	26260-28003	10-25	
13156-41100-H17	1-20	16820-29900	8-11	26281-36200	10-26	
13200-29911	5	16910-31010	1-8	26300-29303	12-15	
13247-05010	5-6			26352-16401	12-16	
13249-05010	5-7			26431-29000	8-19	
13251-30910	5-3			26441-28002	8-20	
13252-29630	5-1	20000		27511-29002	10-30	
13254-01010	5-2			27600-43D01-108	10-35	
13267-36A00	5-28			27620-43D00	10-36	
13268-35010-000	5-35	21111-29000	4-19			
13268-46010	5-29	21200-29003	9-1	30000		
13269-49020	5-33	21410-39131	9-3			
13278-02340	5-30	21441-13A01	9-9			
13295-33010	5-34	21451-19A00	9-10			

PART NO.	FIG.NO. - REF.NO.	PART NO.	FIG.NO. - REF.NO.	PART NO.	FIG.NO. - REF.NO.
32101-29620	13-1	35681-48700-J01	18-7	43300-29910	33-9
32102-29620	13-9	35712-48510	19-2	43510-29303	23-11
32120-29620	13-2	35713-48510	19-3	43550-29300	23-12
32130-29620	13-3	35716-30950	19-11	43560-29300	23-13
32140-32021	13-4	35720-30910-999	19-1	43610-03001	23-18
32150-32020	13-5	35730-30910	19-10	43612-03001	23-19
32800-31C21	15-6	35765-30950	19-12	44110-44AA1-799	24-1
32800-40D10	15-8	35766-30950	19-13	44200-12851	24-3
32900-30520	15-10	35950-30910	17-14	44300-38203	25-1
33410-14120	15-1	35970-30910	20-1	44343-41370	25-7
33510-22010	15-3	35974-48511	20-3	44346-28070	25-4
33541-69010	15-4	36610-29910	21-1	44347-28071	25-3
33542-38B00	15-5	36618-15D20	21-3	44348-28070	25-2
33610-14D20	14-1	36862-27690	21-6	44353-12C01	25-5
33651-37000	14-2	37110-29900	21-7	44357-32470	25-6
33651-37000	14-3	37146-03A00	21-12-1	44541-13600	24-5
33651-37000	14-4	37146-03A10	21-12-2	44600-30832	26-3
33652-36100	27-12	37146-03A20	21-12-3	44600-46810	26-4
34111-01A00	16-9	37146-03A30	21-12-4	44611-29301	26-1
34120-03D10	16-1	37400-32402	31-10	44643-31000	26-5
34124-49910	16-7	37411-45012	31-13	44651-05003	26-2
34150-487A0	16-6	37421-45012	31-11	45100-29950	33-1
34170-487A0	16-11	37720-29350	11-31	45119-48760	33-3
34220-487A0	16-2	37740-48071	21-8	45149-31300	33-2
34910-48510	16-19	38500-48551	21-10	45220-20A01	33-4
34930-05203	16-20	38610-09410	18-15	45280-33400	33-6
34940-30902	16-22	38620-35301	18-16	46310-48500	22-14
34950-48590	16-14			47111-29910-019	27-1-2
34955-28010	16-15			47111-29910-0NF	27-1-4
34996-49910	16-8			47111-29910-14C	27-1-1
35100-48791-999	17-1			47111-29910-30H	27-1-3
35121-48770	17-15			47112-29910	27-4
35135-45600	17-8	40000		47117-45000	27-13
35135-45900	17-4			47211-29900	27-10-6
35136-38A00	17-3			47211-29900-30H	27-10-5
35139-45230	17-5	41100-29930-019	22-1-1	47211-29910-019	27-10-2
35141-14A00	17-2	41100-29940-019	22-1-2	47211-29910-0NF	27-10-4
35151-45900	17-6	41100-29950-019	22-1-3	47211-29910-14C	27-10-1
35154-49200	17-7	41540-29310	22-10	47211-29910-30H	27-10-3
35171-01A10	17-9	41550-29301	22-4		
35603-01A10	18-9	41580-46530	32-16-2		
35603-04A14-999	18-1	41580-48530	32-16-1		
35612-01A02	18-2	41590-46530	32-17-2	50000	
35612-01A02	18-10	41590-48530	32-17-1		
35613-01A00	18-3	41611-48500	22-7		
35613-01A00	18-11	41990-30500	22-2	51103-29920	34
35625-01A00	18-4	42310-48500	23-1-1	51104-29920	34
35625-01A00	18-12	42310-48550	23-1-2	51110-29420	34-8
35627-43010	19-5	43110-48210	23-5	51130-29920	34-1
35671-48700-J01	18-6	43120-48210	23-6	51140-29920	34-2

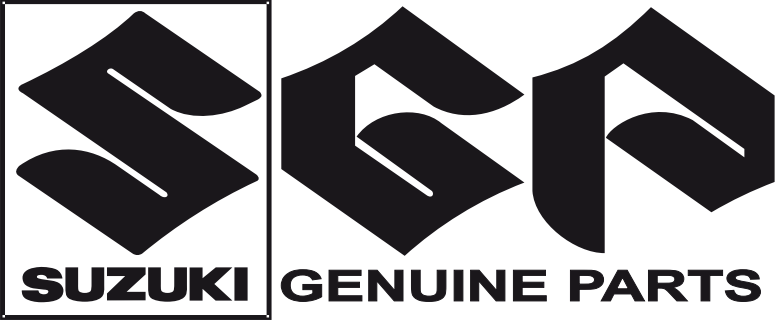
PART NO.	FIG.NO. - REF.NO.	PART NO.	FIG.NO. - REF.NO.	PART NO.	FIG.NO. - REF.NO.
51146-29920	34-9	54451-32401	36-12	61100-29902	37-1
51147-16510	34-5	54611-28402	36-14	61211-29302	37-4
51148-41310	34-6	54621-28401	36-15	61251-28000	37-7
51153-29420	34-3	54632-02201-000	36-16	61262-09200	37-8
51156-29420	34-4	54661-29300	36-18	61273-29902	37-11
51171-29420	34-12	54711-16504	36-22	61280-29300	37-3
51172-18630	34-14	54741-41100	36-24	61311-29900	38-1
51176-48070	34-15	55100-48500-PIR	36-30	61341-48504	37-19
51181-29400	34-16	55200-16510-PIR	36-31	61380-29900	38-2
51189-29400	34-18	55261-11010	39-30	61410-28004	39-19
51195-36220	34-7	55261-14540	36-32	61420-28003	39-20
51311-29920-08C	35-19	55311-48020	36-33	62100-29901	38-7
51321-27C20	35-26	55320-29300	36-34	63112-29911	32-1
51351-29320	34-17	56110-29405-13L	29-1	63113-48200-019	32-8-2
51351-29400	35-27	56211-29320-291	35-25	63113-48200-14C	32-8-1
51356-22012	35-28	56500-45012	29-15	63113-48200-30H	32-8-3
51410-29930-08C	35-1	56600-45013	29-16	63113-48501-13L	32-8-4
51452-29960	35-13	57100-30940	30-2	63120-48501	32-12
51453-05110	35-18	57110-30900	30-1	64110-38002	39-1
51455-29330	35-22	57211-45020	31-1	64210-48000	39-2
51530-29960	35-31	57300-48500	30-4	64311-28000	37-12-2
51540-29960	35-32	57341-25602	30-13	64311-28000-13L	37-12-1
51553-44000	35-33	57341-40002	31-16	64451-30501	39-7
51571-29420-019	34-10	57420-48700	30-5	64511-29000	39-25
51575-29420	34-11	57431-11013	30-6	64711-29301	39-11
51611-20002	35-5	57431-11013	31-5	64730-28001	39-18
51611-33002	35-3	57441-26010	30-8	64750-29300	39-13
51621-28000	35-7	57441-26010	31-7	64791-28001	39-23
51621-33001	35-2	57442-11010	30-9	65100-48500-PIR	39-28
51631-28000	35-9	57442-11010	31-8	65200-44AA0-PIR	39-29
51643-25001	35-8	57460-25610	30-11	65311-48500	39-31
51811C01A00HAZL	28-1-4	57484-49110	30-12	65320-28021	39-32
51811C01A00HBLC	28-1-3	57500-48500	31-3	68120-29900-Y5V	24-2-3
51811C01A00HNGR	28-1-2	57620-48701	31-4	68120-29900-Y5W	24-2-4
51811C01A00HROJ	28-1-1	58110-29303	29-3	68120-29900-Y5Y	24-2-1
51821C01A00H000	28-4	58200-46090	29-8	68120-29900-Y5Z	24-2-2
51827-01A00	28-3	58300-29502	29-13	68131-29990	27-3
51900-24820	35-29	58620-48760	29-2	68135-29910-J8L	27-2-3
53111-48200-0NF	28-11-4	58621-14201	29-6	68135-29910-J8M	27-2-4
53111-48200-14C	28-11-1	58621-29301	29-9	68135-29910-J9M	27-2-1
53111-48200-21C	28-11-2	58642-41300	16-23	68135-29910-J9N	27-2-2
53111-48200-30H	28-11-3			68145-29910-J8L	27-11-3
54110-29300	36-1			68145-29910-J8M	27-11-4
54112-30500	36-2			68145-29910-J9M	27-11-1
54151-30500	36-4			68145-29910-J9N	27-11-2
54210-48502	36-6			68171-44800-88C	28-2-1
54400-07880	36-7			68171-44800-C5Z	28-2-3
54400-07880	39-3			68171-44800-H9J	28-2-2
54441-29305	39-5			68171-44800-J9P	28-2-4
54441-48502	36-9			68233-28000	3-12

60000

PART NO.	FIG.NO. - REF.NO.	PART NO.	FIG.NO. - REF.NO.	PART NO.	FIG.NO. - REF.NO.
68319-33E00	32-18-2	01570-06253	7-4	02122-06303	33-5
68319-33E51	32-18-1	01570-0630A	19-19	02142-0510A	33-8
		01570-0630A	24-9	02142-0512A	13-11
		01570-06403	19-20	02142-0610A	20-4
		01570-0830A	32-13	02142-0610A	22-5
		01580-08123	16-21	02142-06307	27-5
		01580-08123	37-20	02142-06307	27-8
		01580-0816A	22-8	02142-06357	28-5
		01580-0820A	23-17	03111-0412A	16-17
		02112-0308A	1-19	03211-04306	19-4
		02112-0408A	5-9	03511-03146	16-10
		02112-0416A	5-4	04111-2015A	23-15
		02112-0416A	34-13	04111-2015A	23-22
		02112-05063	5-31	04111-2015A	29-5
		02112-0512A	11-33	04111-2015A	29-11
		02112-0512A	19-8	04111-2020A	33-15
		02112-05207	13-7	04111-2020A	37-18
		02112-05207	15-2	04111-2520A	11-6
		02112-0525A	30-3	04111-3030A	36-27
		02112-0525A	31-15	04111-3030A	39-15
		02112-05357	13-6	04211-13189	2-3
		02112-06103	8-18-1	04211-13189	3-3
		02112-06103	35-17	06111-06003	35-6
		02112-0612A	8-18-2	06111-08003	35-4
		02112-0612A	10-24	08113-60060	10-17
		02112-06167	1-21	08123-63027	39-17
		02112-06167	2-20	08133-62017	36-29
		02112-0625A	3-6	08143-62017	36-28
		02112-0625A	3-11	08143-62027	39-16
		02112-06307	3-10	08211-15301	10-13
		02112-0640A	3-5	08211-15301	10-22
		02112-0640A	3-8	08211-17282	9-6
		02112-06457	2-5	08310-0005A	20-2
		02112-06457	3-4	08310-00067	6-8
		02112-06657	2-4	08310-0006A	20-6
		02112-21033	16-3	08310-0006A	23-9
		02112-33083	5-21	08310-00087	8-8
		02112-35123	35-30	08310-00087	39-22
		02112-3516A	8-4	08310-0010B	38-9
		02112-35307	8-5	08310-00123	38-12
		02112-36083	7-11	08313-10107	38-8
		02112-36083	7-27	08316-1006B-000	39-9
		02112-36123	18-17	08316-1008A	1-4
		02112-76203	15-11	08316-1008A	1-13
		02122-03067	31-12	08316-1010B	1-11
		02122-03067	31-14	08316-1010B	18-8
		02122-06127	2-19	08316-1010B	18-14
		02122-0616A	11-13	08319-21057	32-11
		02122-0616A	36-3	08319-2106A	30-7
		02122-0620B	11-11	08319-2106A	31-6

PART NO.	FIG.NO. - REF.NO.	PART NO.	FIG.NO. - REF.NO.	PART NO.	FIG.NO. - REF.NO.
08319-2108B	2-13	09116-06167	17-11	09160-22010	4-8
08319-2112A	37-5	09116-06168	6-12	09164-16001	12-13
08319-3108A	2-13A	09118-08078	7-13	09166-18001	4-21
08321-01057	13-8	09119-08014	8-7	09167-17002	9-5
08321-01057	19-7	09125-06055	28-8	09167-20009	10-33
08321-0106A	5-5	09128-05012	15-9A	09167-20022	10-16
08321-0106A	20-5	09128-06044	3-13	09168-06001	3-14-1
08321-0106A	32-4	09128-06057	25-8	09168-06004	3-14-2
08321-0106A	35-16	09128-10002	7-7	09168-06004	8-15
08321-01087	7-24	09135-06009	8-22	09168-06026	25-9
08321-0108A	37-15	09135-06009	9-17	09168-10002	7-8
08321-01107	11-30	09136-06002	27-14	09168-14002	2-7
08321-01107	35-24	09136-06133	22-11	09168-14002	11-21
08321-01127	35-11	09139-06002	12-8	09169-06010	32-3
08321-01127	35-15	09140-08008	37-16	09169-06010	32-7
08321-2103B	16-4	09140-10043	23-4-1	09169-06010	38-5
08322-0103B	16-5	09140-16005	9-4	09169-06053	28-13
08322-0105A	19-6	09140-18002	4-20	09169-08013	39-27
08322-01067	6-7	09140-18501	39-24	09180-06086	11-5
08322-0106B	8-24	09140-20001	10-32	09180-06195	28-14
08322-0106B	9-18	09141-12004	36-26	09180-06243	28-10
08322-0106B	33-13	09141-12004	39-14	09180-06249	28-6
08322-0106B	33-16	09150-06014	33-12	09180-06251	28-9
08322-01087	2-17	09159-10011	2-12	09180-06259	6-14
08322-0108B	2-16	09159-10097	23-4-2	09180-06259	22-12
08322-0108B	37-17	09159-14015	13-10	09180-06263	17-12
08322-01107	2-15	09160-05001-A05	36-17	09180-06271	19-15
08322-0110B	2-14	09160-05037	32-10	09180-06271	24-8
08322-01127	35-12	09160-05048	16-16	09180-06289	19-16
08322-01127	38-10	09160-06022	11-17	09180-08083	7-22-1
08322-0112B	36-25	09160-06077	19-14	09180-08188	32-14
08322-0112B	37-6	09160-06084	27-6	09180-08200	7-19
08331-3118A	36-20	09160-06084	27-9	09180-08201	7-22-2
08341-31059	4-22	09160-06126	28-7	09180-08302	7-15
08361-3506A	32-5	09160-08003	8-23	09180-12083	11-27
09100-06009	23-10	09160-08054	7-17	09180-12144	36-23
09100-08094	39-26	09160-08134	7-14	09180-15038	39-12
09100-08142	2-9	09160-08134	7-21	09180-20102	10-31
09100-08146	39-21	09160-10021	9-14	09180-25029	4-14
09100-10274	2-8	09160-10093	38-11	09200-06004	29-10
09100-10501	23-3-1	09160-10123	35-21	09200-06013	29-4
09103-08109	2-10	09160-12005	37-10	09200-06013	33-14
09103-08230	2-11	09160-12036	12-11	09200-06033	23-21
09108-08018	1-3	09160-12082	38-13	09200-10008	23-14
09111-06003	11-18	09160-14055	36-11	09209-04012	11-9
09111-08013	37-14	09160-14055	39-10	09209-05011-000	11-34
09111-08015	37-13	09160-16016	12-12	09209-05011-000	12-5
09111-10047	23-3-2	09160-18002	36-19	09209-10002	11-4
09116-05020-000	32-9	09160-19024	23-20	09209-13018	33-11
09116-06006	26-6	09160-21007	10-29	09247-14025	2-6

PART NO.	FIG.NO. - REF.NO.	PART NO.	FIG.NO. - REF.NO.	PART NO.	FIG.NO. - REF.NO.
09259-19001	3-15	09380-30005	9-2		
09261-02001	9-8	09381-16001	4-4		
09261-04002	11-8	09401-04401	8-13		
09262-20073	4-17	09401-08401	8-10		
09262-20073	10-19	09401-10402	25-11		
09263-10002	9-13	09402-48208	1-23		
09263-15009	10-18	09402-56901	6-10		
09263-16015	4-5	09402-66208	6-11		
09263-19006	10-27	09403-09307	21-2		
09263-21006	10-28	09404-06429	8-16		
09263-22032	4-10	09404-06432	21-5		
09269-25013	4-18	09407-12402	30-14		
09280-10001	8-21	09407-12402	31-2		
09280-14011	36-10	09407-14403	21-4-1		
09280-14011	39-6	09407-18403	29-12		
09280-20001	10-34	09407-25401	21-4-2		
09280-24003-000	37-9	09420-04008	13-12		
09280-26005	11-32	09440-04010	11-35		
09283-25066	4-16	09440-04010	12-6		
09283-25107	10-21	09440-05018	11-20		
09283-26007	4-15	09440-09004	33-10		
09283-43004	36-21	09443-06008	11-25		
09285-12006	9-16	09443-07014	11-16		
09285-12006	11-28	09443-07044	36-8		
09285-16002	12-14	09443-07044	39-4		
09287-07002	29-14	09443-11002	7-5		
09303-15004	10-20	09443-12018	9-7		
09307-18002	37-2	09443-14017	23-2		
09308-07004	19-21	09444-26008	11-26		
09320-08018-000	27-7	09448-11004	21-9		
09320-08021	6-13	09448-15004	23-16		
09320-08021	22-13	09448-25001	23-7		
09320-09003	19-17	09448-45004	12-10		
09320-09010	19-18	09462-00008	14-5		
09320-09018	17-13	09471-12006	18-5		
09320-10020	24-6	09471-12006	18-13		
09320-12011	32-15	09471-12077	16-13		
09320-14006	7-18	09471-12082	16-12		
09320-14006	7-23	09471-12083	19-9		
09320-14013	24-7	09471-12184	17-10		
09321-05010	20-7	09481-10001	21-1A		
09329-10007	24-4	09482-00139	1-6-1		
09352-30503-600	5-36	09482-00253-111	1-6-2		
09355-45855-600	8-9	09491-38006	5-11		
09355-50105-600	25-10	09492-25005	5-13		
09360-06009	8-14	09494-00259	5-14		
09363-02002	8-12	09800-21033	22-6		
09380-20006	10-15				
09380-20007	10-6				
09380-20007	10-14				





## **SUZUKI TS185ERCV/TS185ERW PARTS CATALOGUE**

---

3<sup>RD</sup> EDITION

PUBLICADO EN FEBRERO, 2012

SUZUKI MOTOR CORPORATION All rights reserved

No part of this document may be reproduced or transmitted in any form or by any means, electronic or mechanical, for any purpose, without the express written permission of Suzuki Motor Corporation.

SUZUKI MOTOR CORPORATION

Technical Readiness Group, Quality Administration Department  
300 Takatsuka, Minami, Hamamatsu, Japan

SUZUKI MOTOR de COLOMBIA S.A

Departamento de Repuestos, Diseño y Desarrollo de Catalogos de Partes.  
Km 15 Via Pereira-Cartago (PEREIRA, RISARALDA - COLOMBIA) Tel: 3139626 -3139627

---

Reprint Prohibited

SUZUKI MOTOR DE COLOMBIA S.A